

EXHIBIT A

BEGINNING at a point in the southerly line of Route #606, said point lying 6,254.09 feet along said southerly line of Route #606 westerly from the intersection of the said southerly line of Route #606 with the westerly line of Route #1212;

thence leaving said line of Route #606 and running through the land of the Palindrome Corporation the following courses and distances:

S 16° 04' 40" W, 122.55 feet to a point;  
S 36° 48' 30" E, 211.28 feet to a point;

with the arc of a curve to the right whose radius is 204.98 feet and whose chord bearing and chord are S 61° 31' 05" E, and 160.12 feet, respectively, a distance of 164.50 feet to a point;

N 65° 01' 00" E, 105.69 feet to a point;  
S 24° 59' 00" E, 200.00 feet to a point;  
S 65° 01' 00" W, 95.22 feet to a point;

with the arc of a curve to the left whose radius is 240.00 feet and whose chord bearing and chord are S 50° 47' 37" E and 118.99 feet, respectively, a distance of 120.24 feet to a point;

S 65° 08' 46" E, 201.64 feet to a point;  
S 24° 51' 14" W, 60.00 feet to a point;  
N 65° 08' 46" W, 54.12 feet to a point;  
S 24° 51' 14" W, 32.52 feet to a point;

with the arc of a curve to the right whose radius is 91.00 feet and whose chord bearing and chord are S 55° 07' 02" W, and 91.72 feet, respectively, a distance of 96.13 feet to a point;

S 85° 22' 50" W, 43.00 feet to a point;

with the arc of a curve to the left whose radius is 134.00 feet and whose chord bearing and chord are S 81° 32' 13" W and 17.96 feet, respectively, a distance of 17.98 feet to a point;

with the arc of another curve to the left whose radius is 25.00 feet and whose chord bearing and chord are S 32° 02' 07" W, and 34.95 feet, respectively, a distance of 39.84 feet to a point;

with the arc of a curve to the right whose radius is 166.00 feet and whose chord bearing and chord are S 13° 20' 36" W, and 150.55 feet, respectively, a distance of 156.25 feet to a point;

S 12° 30' 00" E, 310.50 feet to a point;  
 N 77° 30' 00" E, 7.00 feet to a point;

with the arc of a curve to the right whose radius is 43.00 feet and whose chord bearing and chord are S 12° 30' 00" E and 86.00 feet, respectively, a distance of 135.09 feet to a point;

S 77° 30' 00" W, 51.00 feet to a point;  
 S 12° 30' 00" E, 48.60 feet to a point;  
 S 77° 30' 00" W, 136.00 feet to a point;  
 S 37° 47' 40" E, 74.38 feet to a point;  
 S 47° 31' 30" E, 97.98 feet to a point;  
 S 62° 19' 41" E, 185.18 feet to a point;  
 S 66° 50' 57" E, 315.40 feet to a point;  
 S 55° 15' 41" E, 166.72 feet to a point;  
 N 55° 43' 44" E, 136.74 feet to a point;  
 S 33° 56' 37" E, 125.36 feet to a point;  
 S 76° 15' 49" E, 185.30 feet to a point;  
 N 88° 29' 33" E, 38.01 feet to a point;  
 S 70° 20' 46" E, 74.33 feet to a point;  
 S 81° 58' 58" E, 143.40 feet to a point;  
 N 53° 29' 55" E, 62.20 feet to a point;  
 N 20° 23' 10" E, 157.89 feet to a point;  
 S 87° 16' 25" E, 21.02 feet to a point;  
 S 19° 14' 58" E, 200.19 feet to a point;  
 S 76° 41' 41" E, 152.08 feet to a point;  
 N 84° 24' 19" E, 246.17 feet to a point;  
 N 65° 55' 28" E, 51.48 feet to a point;  
 N 37° 14' 05" E, 62.80 feet to a point;  
 S 19° 17' 24" E, 84.76 feet to a point;  
 S 2° 01' 17" W, 85.05 feet to a point;  
 S 22° 40' 41" W, 320.75 feet to a point;  
 S 8° 35' 52" W, 204.57 feet to a point;  
 S 17° 38' 17" W, 217.07 feet to a point;  
 S 84° 00' 16" W, 133.81 feet to a point;  
 N 87° 04' 34" W, 78.02 feet to a point;  
 N 82° 58' 18" W, 73.55 feet to a point;  
 S 82° 52' 30" W, 32.25 feet to a point;  
 S 48° 07' 19" W, 38.95 feet to a point;  
 S 35° 39' 19" W, 56.61 feet to a point;  
 N 73° 55' 46" W, 126.83 feet to a point;

with the arc of a curve to the right whose radius is 194.00 feet and whose chord bearing and chord are S 30° 57' 38" W, and 61.89 feet, respectively, a distance of 62.15 feet to a point;

with the arc of a curve to the left whose radius is 25.00 feet and whose chord bearing and chord are S 20° 25' 57" W, and 30.83 feet, respectively, a distance of 33.22 feet to a point;

with the arc of a curve to the right whose radius is 1208.00 feet and whose chord bearing and chord are

S 11° 14' 24" E, and 268.85 feet, respectively, a distance of 269.41 feet to a point;

with the arc of a curve to the left whose radius is 25.00 feet and whose chord bearing and chord are S 53° 03' 19" E, and 37.28 feet, respectively, a distance of 42.06 feet to a point;

with the arc of another curve to the left whose radius is 420.00 feet and whose chord bearing and chord are N 69° 51' 22" E, and 129.73 feet, respectively, a distance of 130.25 feet to a point;

N 60° 58' 20" E, 103.85 feet to a point;

with the arc of a curve to the right whose radius is 565.60 feet and whose chord bearing and chord are N 68° 35' 15" E, and 149.91 feet, respectively, a distance of 150.35 feet to a point;

N 76° 12' 10" E, 112.09 feet to a point;  
 S 15° 31' 56" E, 129.49 feet to a point;  
 S 37° 06' 30" W, 345.04 feet to a point;  
 N 50° 21' 18" W, 126.00 feet to a point;  
 N 22° 21' 23" W, 138.81 feet to a point;

with the arc of a curve to the right whose radius is 480.00 feet and whose chord bearing and chord are S 66° 33' 14" W, and 65.47 feet, respectively, a distance of 65.52 feet to a point;

S 31° 04' 50" E, 110.14 feet to a point;  
 S 5° 28' 39" E, 73.34 feet to a point;  
 S 84° 44' 59" W, 185.78 feet to a point;  
 N 83° 46' 06" W, 175.03 feet to a point;  
 N 12° 13' 13" W, 61.39 feet to a point;  
 N 3° 02' 17" E, 99.44 feet to a point;

with the arc of a curve to the right whose radius is 480.00 feet and whose chord bearing and chord are N 70° 35' 16" W, and 36.18 feet, respectively, a distance of 36.19 feet to a point;

S 10° 01' 33" W, 110.00 feet to a point;  
 S 16° 46' 58" W, 65.80 feet to a point;  
 S 69° 42' 09" W, 77.83 feet to a point;  
 N 87° 19' 41" W, 150.16 feet to a point;  
 N 62° 30' 03" W, 82.30 feet to a point;  
 N 28° 21' 18" W, 71.59 feet to a point;  
 N 7° 11' 03" W, 119.94 feet to a point;  
 N 12° 53' 12" E, 114.11 feet to a point;

with the arc of a curve to the left whose radius is 435.00 feet and whose chord bearing and chord are N 78° 19' 21" W, and 80.10 feet, respectively, a distance of 80.21 feet to a point;

S 1° 18' 28" W, 219.51 feet to a point;  
S 44° 27' 16" W, 74.25 feet to a point;  
S 86° 14' 22" W, 213.46 feet to a point;  
N 56° 50' 01" W, 151.72 feet to a point;  
N 4° 28' 37" E, 177.52 feet to a point;

with the arc of a curve to the right whose radius is 720.00 feet, and whose chord bearing and chord arc N 83° 43' 28" W, and 45.20 feet, respectively, a distance of 45.21 feet to a point;

S 8° 04' 28" W, 101.81 feet to a point;  
S 17° 03' 54" W, 85.06 feet to a point;  
S 79° 56' 40" W, 110.43 feet to a point;  
S 38° 04' 44" W, 123.23 feet to a point;  
N 49° 07' 44" W, 165.59 feet to a point;

with the arc of a curve to the right whose radius is 102.49 feet, and whose chord bearing and chord arc N 84° 31' 53" W, and 37.58 feet, respectively, a distance of 37.80 feet to a point;

with the arc of a curve to the left whose radius is 554.31 feet, and whose chord bearing and chord arc N 77° 48' W, and 74.37 feet, respectively, a distance of 74.43 feet to a point;

S 26° 43' 17" E, 165.28 feet to a point;  
S 75° 29' 59" W, 59.91 feet to a point;  
N 80° 38' 49" E, 172.29 feet to a point;  
N 66° 51' 51" W, 119.62 feet to a point;  
N 81° 09' 08" W, 214.55 feet to a point;  
N 66° 35' 16" W, 105.70 feet to a point;  
N 56° 04' 57" W, 139.79 feet to a point;  
N 33° 41' 24" W, 140.62 feet to a point;  
N 16° 56' 43" W, 133.81 feet to a point;  
DUE NORTH, 95.00 feet to a point;  
N 12° 30' 22" E, 135.74 feet to a point;

with the arc of a curve to the right whose radius is 550.00 feet, and whose chord bearing and chord arc N 34° 41' 30" W, and 520.98 feet, respectively, a distance of 542.73 feet to a point;

N 6° 25' 20" W, 248.52 feet to a point;

with the arc of a curve to the left whose radius is 25.00 feet, and whose chord bearing and chord arc N 54° 02' 35" W, and 36.94 feet, respectively, a distance of 41.56 feet to a point;

with the arc of a curve to the left whose radius is 420.00 feet, and whose chord bearing and chord arc S 50° 37' 25" W, and 283.33 feet, respectively, a distance of 289.00 feet to a point;

S 38° 54' 40" W, 250.00 feet to a point;

with the arc of a curve to the right whose radius is 545.00 feet, and whose chord bearing and chord are S 63° 44' 40" W, and 457.78 feet, respectively, a distance of 472.43 feet to a point;

S 88° 34' 40" W, 50.00 feet to a point;  
N 1° 25' 20" W, 60.00 feet to a point;  
N 0° 53' 00" W, 145.31 feet to a point;  
N 4° 47' 24" W, 179.63 feet to a point;  
N 7° 10' 10" E, 160.25 feet to a point;  
DUE NORTH, 186.00 feet to a point;  
N 74° 40' 30" E, 215.67 feet to a point;  
N 52° 04' 00" E, 172.43 feet to a point;  
N 41° 05' 40" E, 436.12 feet to a point;  
N 26° 33' 54" W, 626.35 feet to a point in the

aforsaid southerly line of Route #606;

thence with said line of Route #606, the following courses and distances;

N 71° 14' 40" E, 43.00 feet to a point;

with the arc of a curve to the left whose radius is 1934.86 feet, and whose chord bearing and chord are N 61° 41' 44" E, and 441.33 feet, respectively, a distance of 442.29 feet to a point;

N 58° 08' 50" E, 424.86 feet to a point;  
N 60° 26' 30" E, 250.22 feet to a point;  
N 58° 49' 00" E, 427.03 feet to a point;  
N 53° 11' 30" E, 108.00 feet to a point; and  
N 58° 08' 50" E, 70.00 feet to the beginning,

containing 174.0034 acres, less and except, however, the following parcels not used within this boundary for density computations:

PARCEL # 11

BEGINNING at a point in the easterly line of Parcel #9, said point also being in the easterly line of Orchard Lane and running thence with the said line of Parcel #9, N 20° 26' 50" E, 114.05 feet to a point and N 26° 40' 00" E, 231.97 feet to a point in the southerly line of Parcel #10;

thence with said line of Parcel #10, the following courses and distances;

S 14° 24' 23" E, 146.66 feet to a point;  
N 86° 38' 01" E, 85.15 feet to a point;  
S 62° 58' 09" E, 275.05 feet to a point; and  
S 46° 15' 33" E, 30.00 feet to a point in the westerly line of Lot 23;

thence with said line of Lot 23, and continued with Lot 24, S 33° 12' 15" W, 246.97 feet to a point, and continuing with Lot 24, S 7° 51' 54" E, 106.62 feet to a point in the southerly line of Lot 25;

thence with said line of Lot 25, S 55° 04' 50" E, 129.28 feet to a point in the southerly line of Lot 26;

thence with said line of Lot 26 and continued with Lot 27, S 84° 20' 11" E, 129.59 feet to a point in the westerly line of Lot 28;

thence with said line of Lot 28 and continued with Lots 29 and 30, S 26° 52' 57" E, 161.45 feet to a point;

thence continuing with said Lot 30, N 73° 48' 39" E, 149.84 feet to a point in the southerly line of South Shore Road;

thence with South Shore Road the following courses and distances:

with the arc of a curve to the left whose radius is 194.00 feet and whose chord bearing and chord are S 69° 28' 40" E, and 167.84 feet, respectively, a distance of 173.57 feet to a point;

with the arc of a curve to the right whose radius is 25.00 feet and whose chord bearing and chord are S 20° 19' E, and 31.31 feet, respectively, a distance of 33.83 feet to a point;

with the arc of another curve to the right whose radius is 1158.00 feet and whose chord bearing and chord are S 11° 14' 53" E, and 254.99 feet, respectively, a distance of 255.51 feet to a point;

and, with the arc of a curve to the right whose radius is 25.00 feet and whose chord bearing and chord are S 44° 10' 47" W, and 37.80 feet, respectively, a distance of 42.85 feet to a point in the northerly line of Fairway Drive;

thence with said line of Fairway Drive the following courses and distances:

with the arc of a curve to the right whose radius is 420.00 feet and whose chord bearing and chord are S 08° 38' W, and 133.47 feet, respectively, a distance of 134.04 feet to a point;

N 68° 25' 40" W, 349.12 feet to a point;

with the arc of a curve to the left whose radius is 495.00 feet and whose chord bearing and chord are

N 52° 36' 30" W, and 269.88 feet, respectively, a distance of 273.34 feet to a point;

S 79° 56' 00" W, 77.79 feet to a point;

with the arc of a curve to the right whose radius is 660.00 feet and whose chord bearing and chord are N 67° 42' 27" W, and 282.53 feet, respectively, a distance of 284.74 feet to a point; and

with the arc of a curve to the right whose radius is 25.00 feet and whose chord bearing and chord are N 30° 27' 24" W, and 35.29 feet, respectively, a distance of 39.18 feet to a point in the aforesaid easterly line of Orchard Lane;

thence with said line of Orchard Lane the following courses and distances:

with the arc of a curve to the left whose radius is 243.00 feet and whose chord bearing and chord are N 12° 53" E, and 119.39 feet, respectively, a distance of 120.62 feet to a point;

with the arc of a curve to the right whose radius is 292.79 feet and whose chord bearing and chord are N 2° 56' 20" E, and 170.60 feet, respectively, a distance of 173.18 feet to a point;

N 19° 53' 00" E, 88.21 feet to a point; and

with the arc of a curve to the left whose radius is 180.00 feet and whose chord bearing and chord are N 16° 39' 10" W, and 214.32 feet, respectively, a distance of 229.56 feet to the beginning;

containing 12.8341 acres.

PARCEL #5-A

BEGINNING at a point in the southerly line of North Shore Drive, said point also being in the westerly line of Parcel #6-E;

thence with said line of Parcel #6-E and continued with the westerly line of Parcel #6-D, S 12° 30' 00" E, 209.68 feet to a point in the northerly line of Parcel #5;

thence with said line of Parcel #6 and continued with the northerly line of Parcel #5, S 77° 30' 00" W, 339.35 feet to a point in the aforesaid southerly line of North Shore Drive;

thence with said line of North Shore Drive, the following courses and distances:

with the arc of a curve to the right whose radius is 210.00 feet and whose chord bearing and chord are N 33° 23' 52" E, and 292.91 feet, respectively, a distance of 324.14 feet to a point;

N 76° 37' 00" E, 125.00 feet to a point; and

with the arc of a curve to the left whose radius is 185.00 feet and whose chord bearing and chord are N 7° 26' 06" E, and 7.63 feet, respectively, a distance of 7.63 feet to the beginning;

containing 1.4014 acres.

PARCEL #3

BEGINNING at a point in the northerly line of North Shore Drive, said point also being in the easterly line of Parcel #2;

thence with said line of Parcel #2, N 17° 29' 37" E, 288.69 feet to a point in the southerly line of Parcel #3;

thence with said line of Parcel #4, N 78° 41' 20" E, 295.35 feet to a point in the aforesaid northerly line of North Shore Drive;

thence with said line of North Shore Drive with the arc of a curve to the right whose radius is 325.00 feet and whose chord bearing and chord are S 31° 19' 35" W, and 390.13 feet, respectively, a distance of 418.44 feet to the beginning;

containing 1.3698 acres.

PARCEL #14

BEGINNING at a point in the southerly line of Fairway Drive, said point also being in the westerly line of Lot 74;

thence with said line of Lot 74, S 11° 29' 31" W, 90.80 feet to a point in the westerly line of Lot 73;

thence with said line of Lot 73, S 12° 31' 54" W, 87.57 feet to a point in the southerly line of Lot 72;

thence with said line of Lot 72, S 11° 16' 00" W, 127.78 feet to a point in the northerly line of Hook Road;

thence with said line of Hook Road, the following courses and distances:

with the arc of a curve to the left whose radius is 604.31 feet, and whose chord bearing and chord are N 86° 54' 27" W, and 135.96 feet, respectively, a distance of 136.25 feet to a point;



with the arc of a curve to the right whose radius is 441.54 feet, and whose chord bearing and chord are N 78° 55' 50" W, 222.64 feet, respectively, a distance of 225.07 feet to a point;

with the arc of a curve to the left whose radius is 451.32 feet, and whose chord bearing and chord are N 74° 51' 40" W, and 165.01 feet, respectively, a distance of 165.94 feet to a point in the easterly line of Lot 71;

thence with said line of Lot 71, N 7° 56' 31" E, 145.11 feet to a point in the southerly line of Lot 70;

thence with said line of Lot 70, and continued with Lot 69, N 5° 31' 10" E, 185.27 feet to a point in the aforesaid southerly line of Fairway Drive;

thence with said line of Fairway Drive, the following courses and distances:

S 84° 39' 20" E, 143.00 feet to a point;

with the arc of a curve to the right whose radius is 945.00 feet and whose chord bearing and chord are S 77° 47' 00" E, and 226.15 feet to a point; and

S 70° 54' 40" E, 184.53 feet to the beginning;

containing 4.2278 acres.

PARCEL 12

BEGINNING at a point in the southerly line of Parcel #9, said point also being in the westerly line of Orchard Lane;

thence with said line of Orchard Lane, the following courses and distances:

with the arc of a curve to the right whose radius is 130.00 feet and whose chord bearing and chord are S 10° 39' 10" E, and 154.79 feet, respectively, a distance of 165.80 feet to a point;

S 19° 53' 00" W, 88.21 feet to a point;

with the arc of a curve to the left whose radius is 342.79 feet, and whose chord bearing and chord are S 2° 56' 20" W, and 199.81 feet, respectively, a distance of 202.75 feet to a point;

with the arc of a curve to the right whose radius is 193.00 feet, and whose chord bearing and chord are S 6° 50' 16" E, and 87.93 feet respectively, a distance of 88.71 feet to a point; and

with the arc of a curve to the right whose radius is 25.00 feet, and whose chord bearing and chord are S 62° 43' 04" W, and 37.38 feet, respectively, a distance of 42.23 feet to a point in the northerly line of Fairway Drive;

thence with said line of Fairway Drive the following courses and distances:

N 70° 54' 40" W, 316.53 feet to a point;

with the arc of a curve to the left whose radius is 1005.00 feet and whose chord bearing and chord are N 77° 47' 00" W, and 240.51 feet, respectively, a distance of 241.09 feet to a point;

N 84° 39' 20" W, 265.15 feet to a point;

with the arc of a curve to the right whose radius is 490.00 feet, and whose chord bearing and chord are N 42° 32' 20" W, and 618.28 feet, respectively, a distance of 669.06 feet to a point;

N 6° 25' 20" W, 249.54 feet to a point; and

with the arc of a curve to the right whose radius is 25.00 feet, and whose chord bearing and chord are N 54° 49' 40" E, and 35.51 feet, respectively, a distance of 39.49 feet to a point in the southerly line of North Shore Drive;

thence with said line of North Shore Drive, N 84° 04' 40" E, 99.55 feet to a point and with the arc of a curve to the left whose radius is 385.00 feet and whose chord bearing and chord are N 48° 13' 32" E, and 450.91 feet, respectively, a distance of 481.82 feet to a point in the aforesaid southerly line of Parcel #9;

thence with said line of Parcel #9 the following courses and distances:

S 23° 22' 40" E, 662.32 feet to a point;  
S 82° 47' 34" E, 564.35 feet to a point; and  
N 36° 48' 40" E, 21.99 feet to the beginning;

containing 17.5424 acres.

PARCEL 13

BEGINNING at a point in the southerly line of Route #606, said point also being in the easterly line of Parcel #4;

thence with said line of Route #606, N 58° 17' 23" E, 852.75 feet to a point and S 79° 15' 10" E, 59.04 feet to a point in the westerly line of Village Road;

thence with said line of Village Road, S 36 48' 30" E, 21.72 feet to a point and S 17° 53' 23" E, 108.66 feet to a point in the northerly line of North Shore Drive;

thence with said line of North Shore Drive, the following courses and distances:

S 48° 38' 00" W, 89.72 feet to a point;

with the arc of a curve to the left whose radius is 201.05 feet and whose chord bearing and chord are S 41° 03' 29" W, and 170.39 feet, respectively, a distance of 175.96 feet to a point;

S 15° 59' 10" W, 205.95 feet to a point;

with the arc of a curve to the right whose radius is 125.00 feet and whose chord bearing and chord are S 46° 18' 05" W, and 126.19 feet, respectively, a distance of 132.28 feet to a point;

S 76° 37' 00" W, 125.00 feet to a point; and

with the arc of a curve to the left whose radius is 270.00 feet and whose chord bearing and chord are S 57° 24' 40" W, and 177.64 feet, respectively, a distance of 181.01 feet to a point in the aforesaid easterly line of Parcel #4;

thence with said line of Parcel #4, N 39° 30' 00" W, 364.19 feet to the beginning;

containing 5.9749 acres.

In the Clerk's Office of the Circuit Court of Fairfax County, Virginia MAR 25 1964 at 3:31 P.M.  
This instrument was received and, with the certificate annexed, admitted to record with plat attached

Teste:

*Thomas S. Chapman, Jr.*

Clerk

area 131 of 341

Baron Cameron Ave  
(Riverview)

Village Road

North

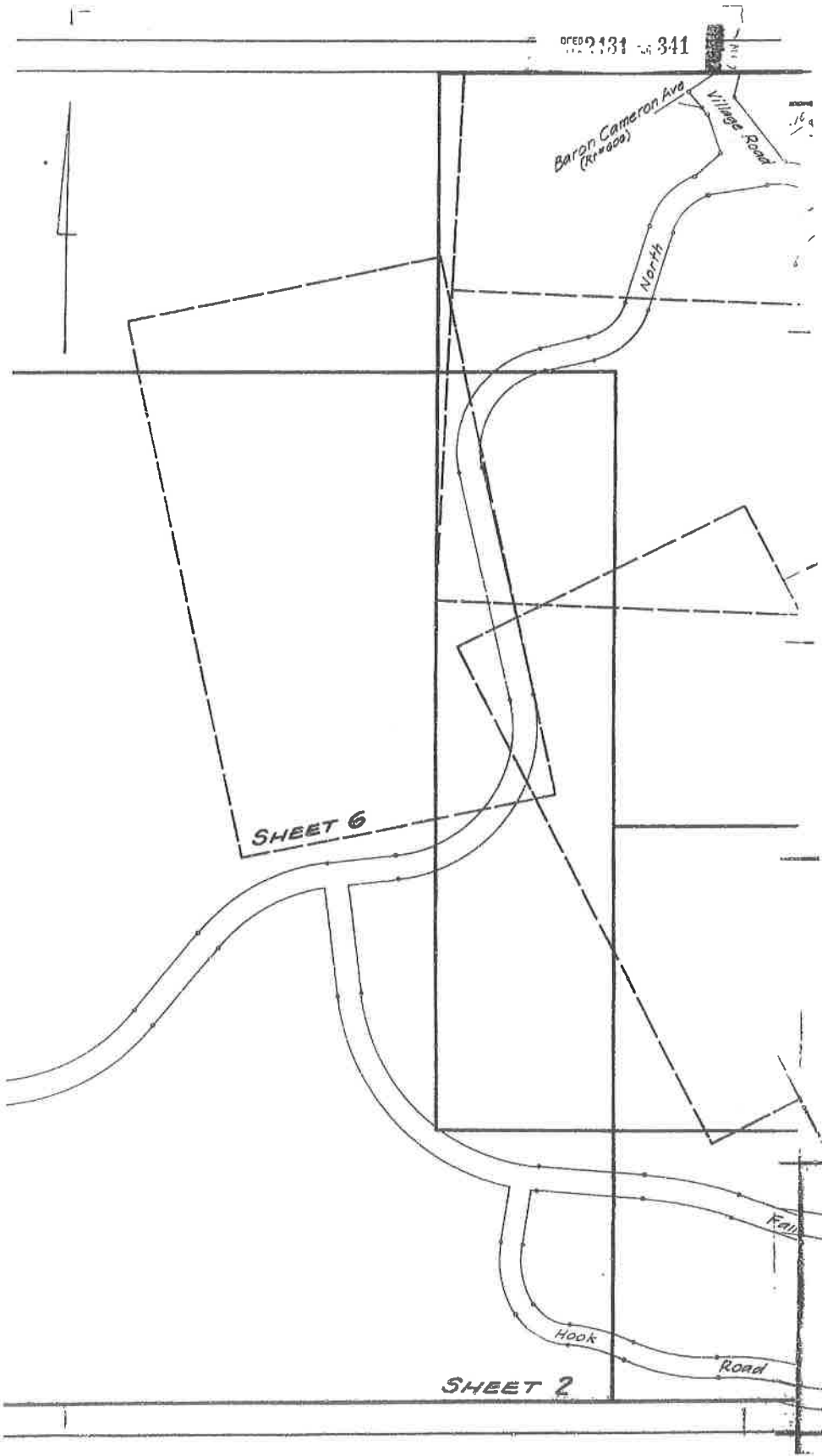
SHEET 6

Fair

Hook

Road

SHEET 2





F  
 3/25/64  
 5/23/6

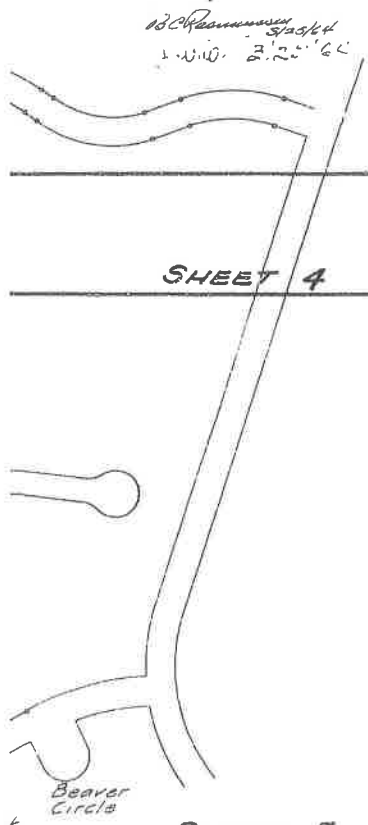
A  
 DIVIC

DENSITY INFORMATION

Parcel No.	Area / Acres	Prop. Density	Type of Use	Persons Permitted	Units Proposed	Persons Proposed	Area / Acres
1	10 1768		School				10 1768
2	2 8910		Church				2 8910
3	1 5558		Not Included for Density Comps				
4	18 1802	Medium	Town House	255	20	270	18 1802
5	0 8700		Tennis Club				0 8700
5-A	1 4014		Not Included for Density Comps				
6	1 0370	High	Town House	55	21	65	1 0370
6-A	1 9694	High	Town House	118	20	60	1 9694
6-B	3 7502	High	Hi-Rise Apt	524	70	108	3 7502
		High	Garage Apt		52	150	
6-C	1 0143		Playground				1 0143
6-D	1 0094		Church				1 0094
6-E	0 9894	High	Town House	59	6	18	0 9894
7	0 4525		Service Sta				
			Not Incl for Density Comps				
8	0 7515		Swim Club				0 7515
9	15 1871	Medium	Town House	212	90	270	15 1871
10	27 8054		Lake				27 8054
11	12 8341		Not Included for Density Comps				
12	17 5484						
13	5 2667						
14	4 2278						
Single Units	20 7351	Medium	Individual Use	291	72	266	20 7351
Service Station	17 2414						17 2414
C	0 6882	Medium	Garage Apt.	10	14	42	0 6882
D	0 2927						0 2927
Garage Apt	0 0922						0 0922
Garage Apt	0 0257						0 0257
<b>Total</b>	<b>174 0054</b>			<b>1567</b>	<b>435</b>	<b>1250</b>	<b>130 2117</b>

3/25/64 John J. ...  
3/23/64 ...

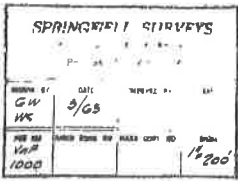
APPROVED  
COUNTY OF FAIRFAX  
DIVISION OF SANITATION  
By \_\_\_\_\_  
Date \_\_\_\_\_



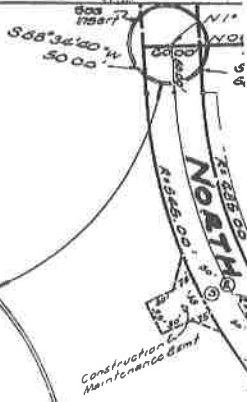
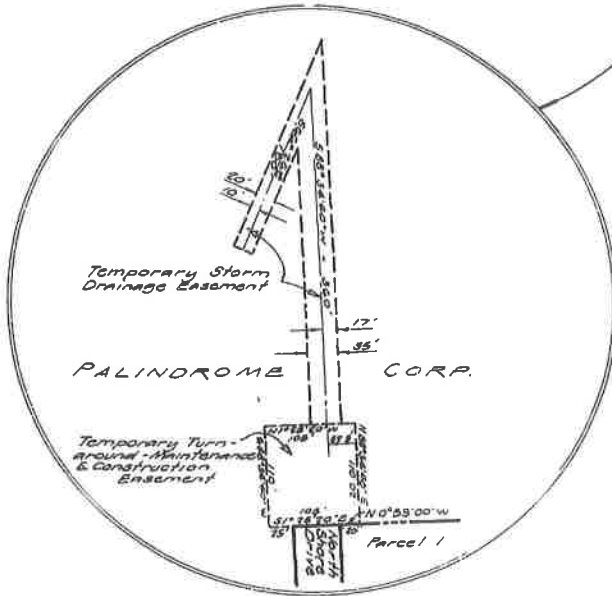
Total area used for density computations - 130 2117 ac  
Persons permitted = 130 2117 ac @ 11 = 1433  
Persons proposed = 1250

Note:  
\* No construction, development, or resubdividing of this parcel will be permitted until proper and adequate easements and drainage of natural and storm water are provided and approved by the appropriate County Officials.  
Major walkways will be provided in accordance with required walks when individual parcels are submitted for approval.

INDEX SHEET TO SECTION I,  
FINAL PLAN OF FIRST R.P.C.  
**RESTON**  
CENTREVILLE MAGISTERIAL DISTRICT  
FAIRFAX COUNTY, VA.



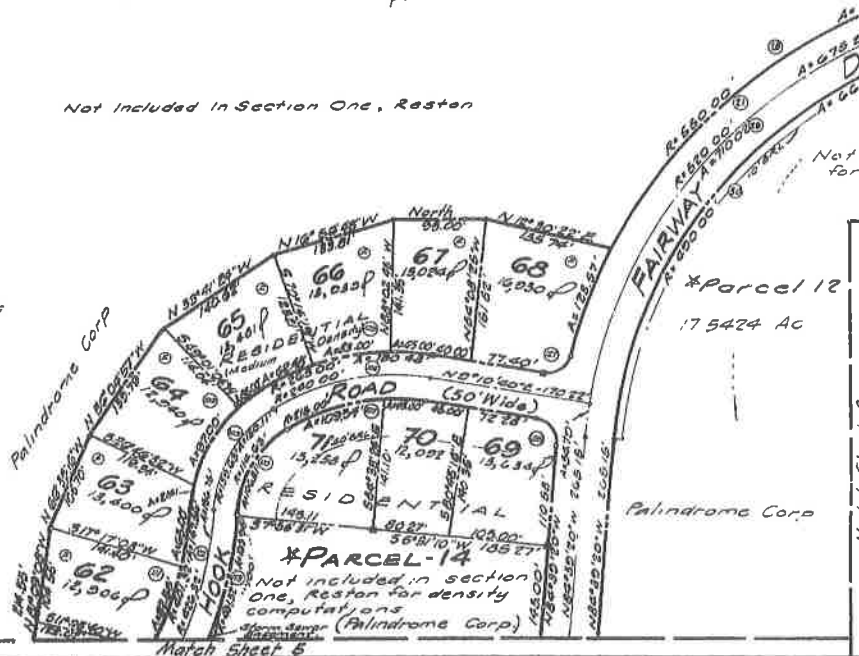
Palindrome Corp

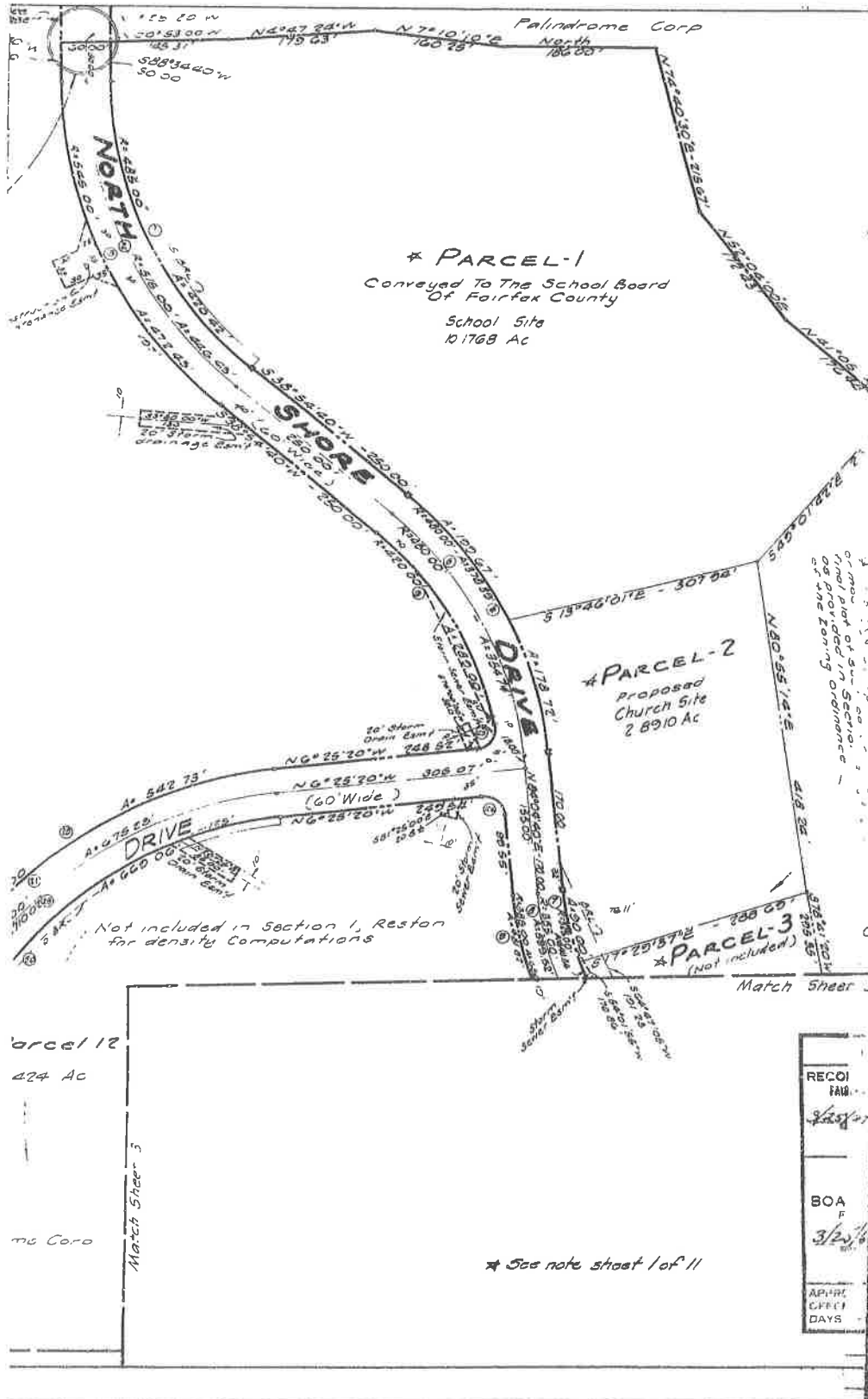


Palindrome Corp

Not included in Section One, Reston

⊙ = Fairway Lots

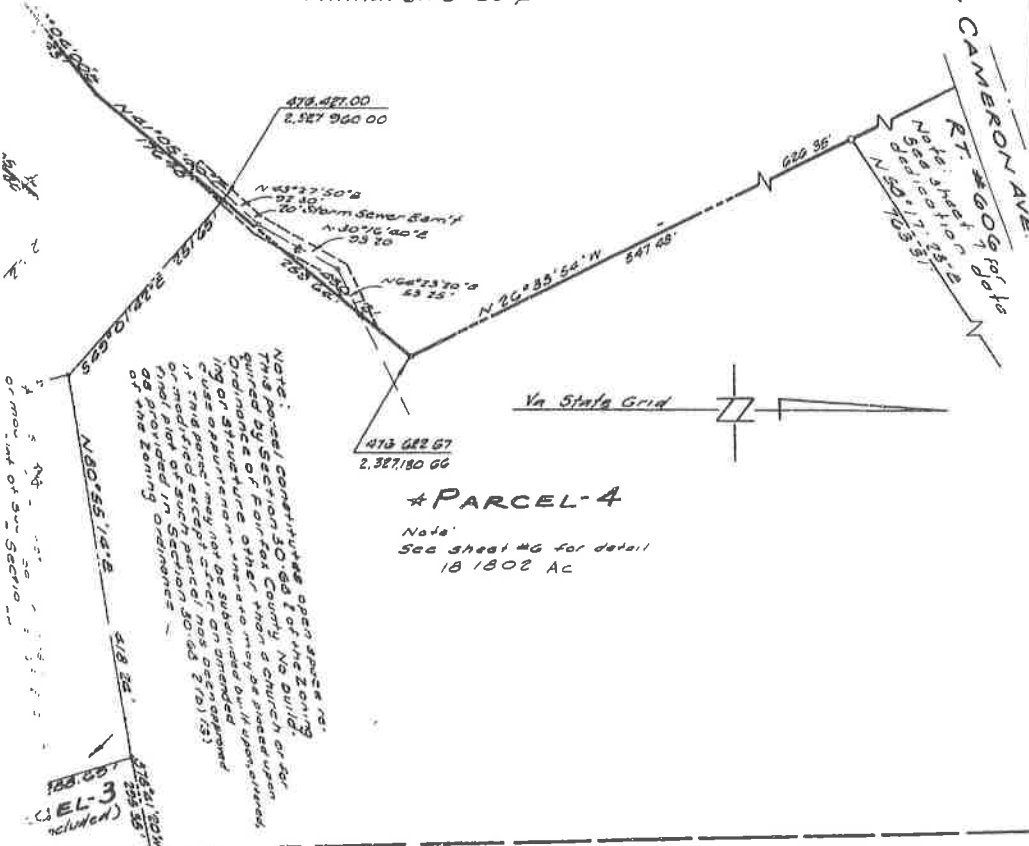






Not Included in Section One, Reston  
 Palindrome Corp

BARON CAMERON AVE.  
 RT. 3609 R/O's  
 Note: 15' R/O's  
 N 55° 10' 15" E 175.53'



473 422 67  
 2,327,180 GG

**\* PARCEL-4**  
 Note:  
 See sheet #6 for detail  
 18 1802 Ac

NOTE:  
 This parcel contains an open space not zoned by Section 10.6d (1) of the zoning Ordinance of Fairfax County. No building or structure shall be erected upon this space, nor shall any other structure be erected upon this space, nor shall any other structure be erected upon this space, nor shall any other structure be erected upon this space.

Match Sheet 3

**FINAL PLAT**  
 RECOMMENDED FOR APPROVAL  
 FAIRFAX COUNTY PLANNING ENGINEER  
 3/25/64 *[Signature]*

**APPROVED**  
 BOARD OF SUPERVISORS  
 FAIRFAX COUNTY, VIRGINIA  
 3/25/64 *[Signature]*

APPROVAL VOID IF PLAT IS NOT  
 OFFERED FOR RECORD WITHIN 90  
 DAYS AFTER DATE THEREOF

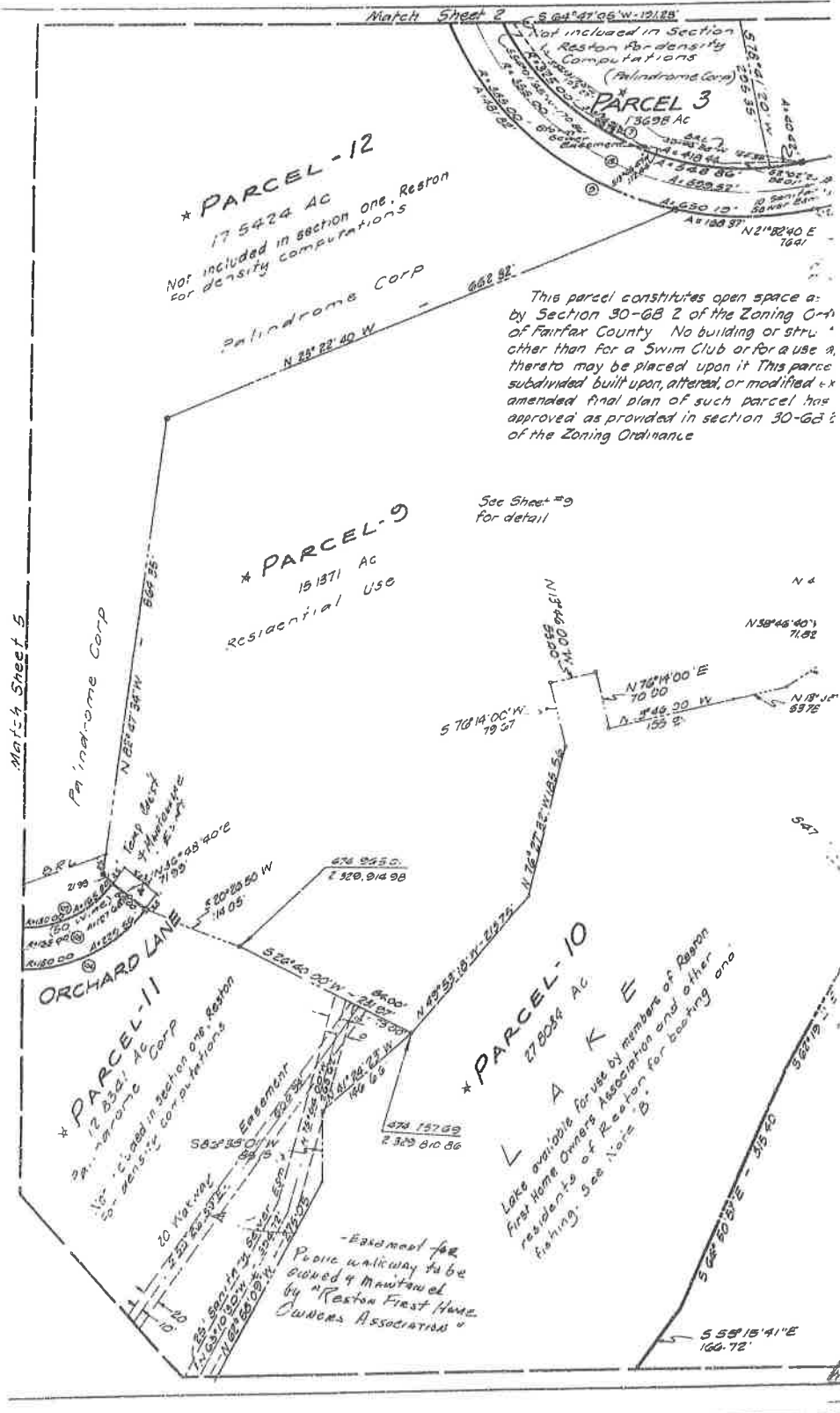
**APPROVED**  
 COUNTY OF FAIRFAX  
 DIVISION OF SANITATION  
 By *[Signature]*  
 3-21-64  
 Date

10' R/O's  
 3/25/64  
 J.W.W. 3/25/64



**SPRINGFIELD SURVEYS**  
 5700 HANOVER AVENUE  
 SPRINGFIELD, VIRGINIA

Drawn by GW	Date 4-2-65	Checked by	Date
Job No 1000	Field Book No	Hard Copy No	Scale 1" = 100'
REVISED			



**\* PARCEL - 12**  
 17 542.4 AC  
 Not included in section One, Reston  
 for density computations

Palindrome Corp  
 N 33° 22' 40" W - 662.92'

This parcel constitutes open space as by Section 30-6B 2 of the Zoning Ordinance of Fairfax County. No building or structure other than for a Swim Club or for a use thereto may be placed upon it. This parcel subdivided, built upon, altered, or modified & amended final plan of such parcel has approved as provided in section 30-6a 2 of the Zoning Ordinance

**\* PARCEL - 9**  
 15 187 AC  
 Residential Use

See Sheet #9  
 for detail

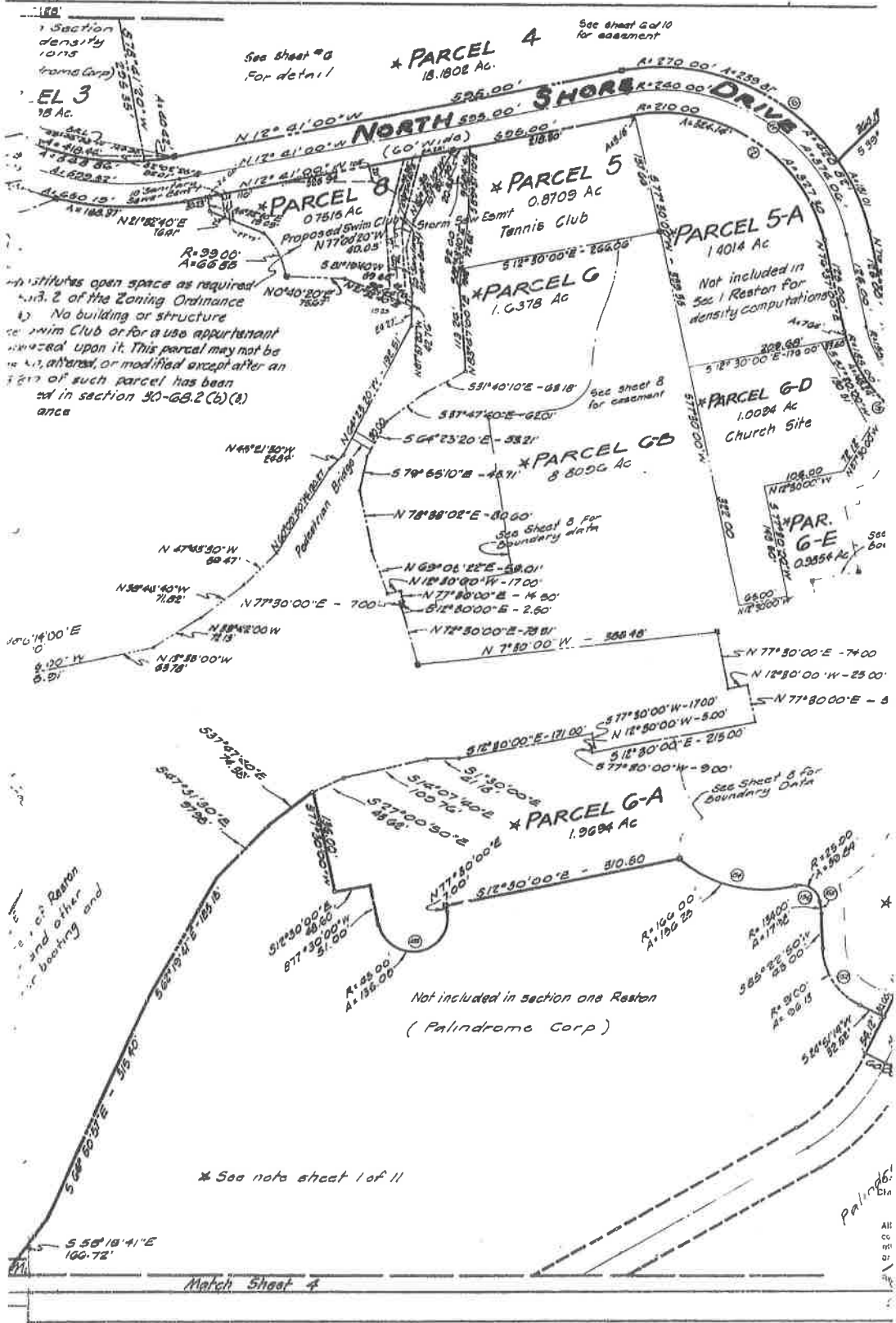
**\* PARCEL - 11**  
 12 832.1 AC  
 Palindrome Corp  
 Not included in section One, Reston  
 for density computations

**\* PARCEL - 10**  
 27 008.4 AC  
 L A K E  
 Lake available for use by members of Reston First Home Owners Association and other residents of Reston for boating and fishing. See Note B.

Easement for  
 Private walkway to be  
 owned & maintained  
 by "Reston First Home  
 Owners Association"

Match Sheet 5

Match Sheet 2



institutes open space as required  
 Art. 2 of the Zoning Ordinance  
 No building or structure  
 swim Club or for a use appurtenant  
 attached upon it. This parcel may not be  
 altered, or modified except after an  
 of such parcel has been  
 in section 30-68.2 (b) (8)  
 ance

See sheet 8 for easement

See sheet 3 for boundary data

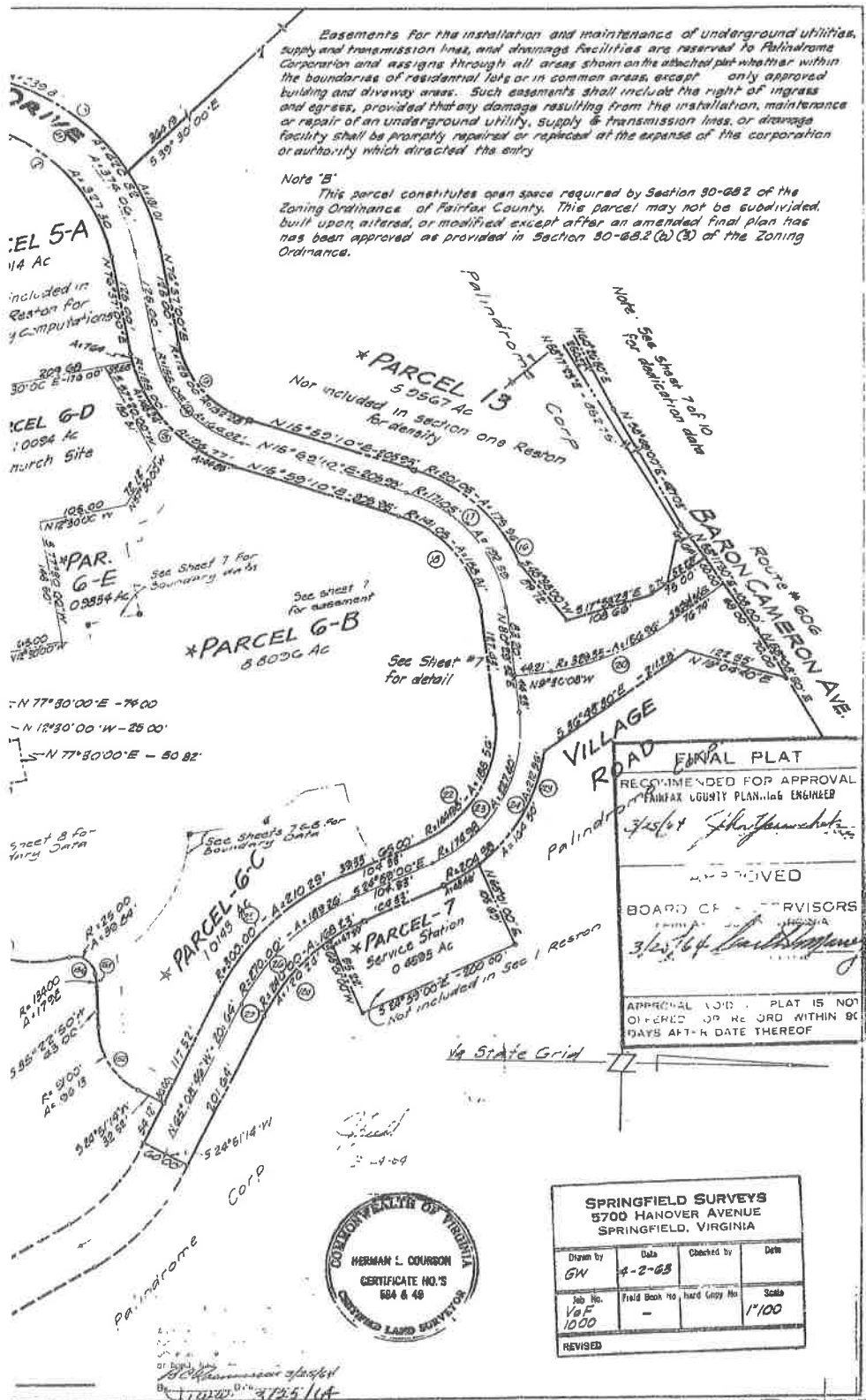
See sheet 8 for boundary data

Not included in section one Reston  
 (Palindrome Corp)

\* See note sheet 1 of 11

Palindrom Corp

ALL  
 CO  
 MP  
 OF



**FINAL PLAT**  
RECOMMENDED FOR APPROVAL  
FAIRFAX COUNTY PLANNING ENGINEER  
*[Signature]*  
APPROVED  
BOARD OF SUPERVISORS  
*[Signature]*  
APPROVAL VOID - PLAT IS NOT OFFERED OR RECORDED WITHIN 90 DAYS AFTER DATE THEREOF



SPRINGFIELD SURVEYS 5700 HANOVER AVENUE SPRINGFIELD, VIRGINIA			
Drawn by GW	Date 4-2-68	Checked by	Date
Job No. 1000	Field Book No.	Hard Copy No.	Scale 1"=100'
REVISED			

Match Sheet 3

Lake available for use by members of Reston First Home Owners Assoc, and other residents of Reston for boating & fishing see Note "B"

\* PARCEL-10

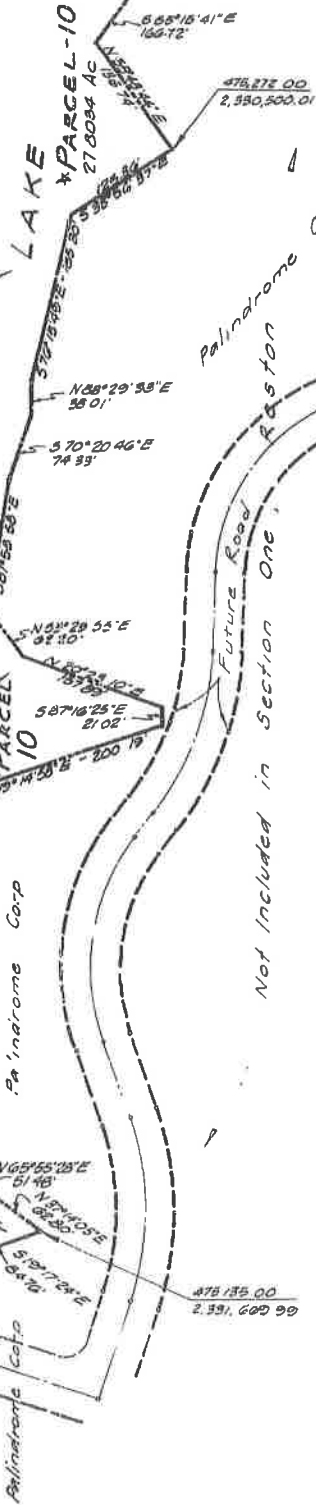
\* PARCEL-10  
27,009.4 Ac

\* PARCEL-10

Palindrome Corp

Palindrome Corp

Match Sheet 5



Palindrome Corp

Future Road Position

Not included in Section One



NOTE "B"  
 This parcel constitutes Section 30-6B.2 of the Zoning Ordinance. This parcel may not be built upon, a "flea" or "moo" except after an amended final plan, as provided in Section 30-6B.2 Ordinance

\* See note sheet 1 of 1

Easement and transmission and assigns to the boundaries building and drainage or repair of an shall be prompt which directed



VICINITY MAP  
Scale 1" = 2000'

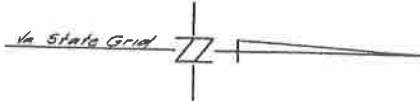
**SUR**

1. Herriar land embrace in the name or acquired by t March 27, 196 the subdivisic and shown or calculated to thus the subdivisior Control Jdrir

Given un -

constitutes open space required by the Zoning Ordinance of Fairfax may not be subdivided, and the proposed plan has been approved on 30-68.2 (b)(3) of the Zoning

Easements for the installation and maintenance of underground utilities, supply and transmission lines and drainage facilities are reserved to Palindrome Corporation and assigned through all areas shown on the attached plat, whether within the boundaries of residential lots or in common areas, except only approved building and driveway areas. Such easements shall include the right of ingress and egress, provided that any damage resulting from the installation, maintenance or repair of an underground utility, supply and transmission lines or drainage facility shall be promptly repaired or replaced at the expense of the corporation or authority which directed the entry.

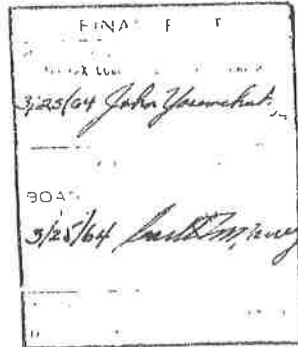
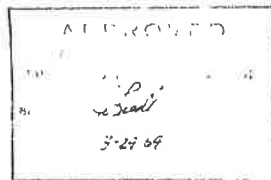


## SURVEYORS CERTIFICATE

I, Herman L. Courson, a duly certified land surveyor, do hereby certify that the land embraced in the subdivision shown on this plat of Sec. 1, the 1<sup>st</sup> R.C. Reston is now in the name of The Palindrome Corporation, per Deed Book 1288, page 157 and was acquired by the above from the A. Smith Bowman Distillery Inc, by deed dated March 27, 1961 and recorded in the land records of Fairfax County, Virginia, that the subdivision is within the bounds of the original tracts and accurately described and shown on this plat by metes and bounds, courses and distances, bearings are calculated to the Virginia State Grid Meridian and that there are iron pipes shown thus  $\longleftarrow$  and concrete monuments shown thus  $\longleftarrow$  marking the limits of the subdivision in accordance with the requirements of the Fairfax County Subdivision Control Ordinance.

Given under my hand this 10<sup>th</sup> day of March, 1964

*Herman L. Courson*  
 Herman L. Courson  
 Certified Land Surveyor  
 Springfield, Virginia



*J.C. of Palindrome 3/25/64*  
*J.W.W. 3/25/64*

<b>SPRINGFIELD SURVEYS</b> 5700 HANOVER AVENUE SPRINGFIELD, VIRGINIA			
Drawn by	Date	Checked by	Scale
GW	4-2-63		
Job No. 1000	Field Book No.	Hard Copy No.	1" = 100'
REVISED			

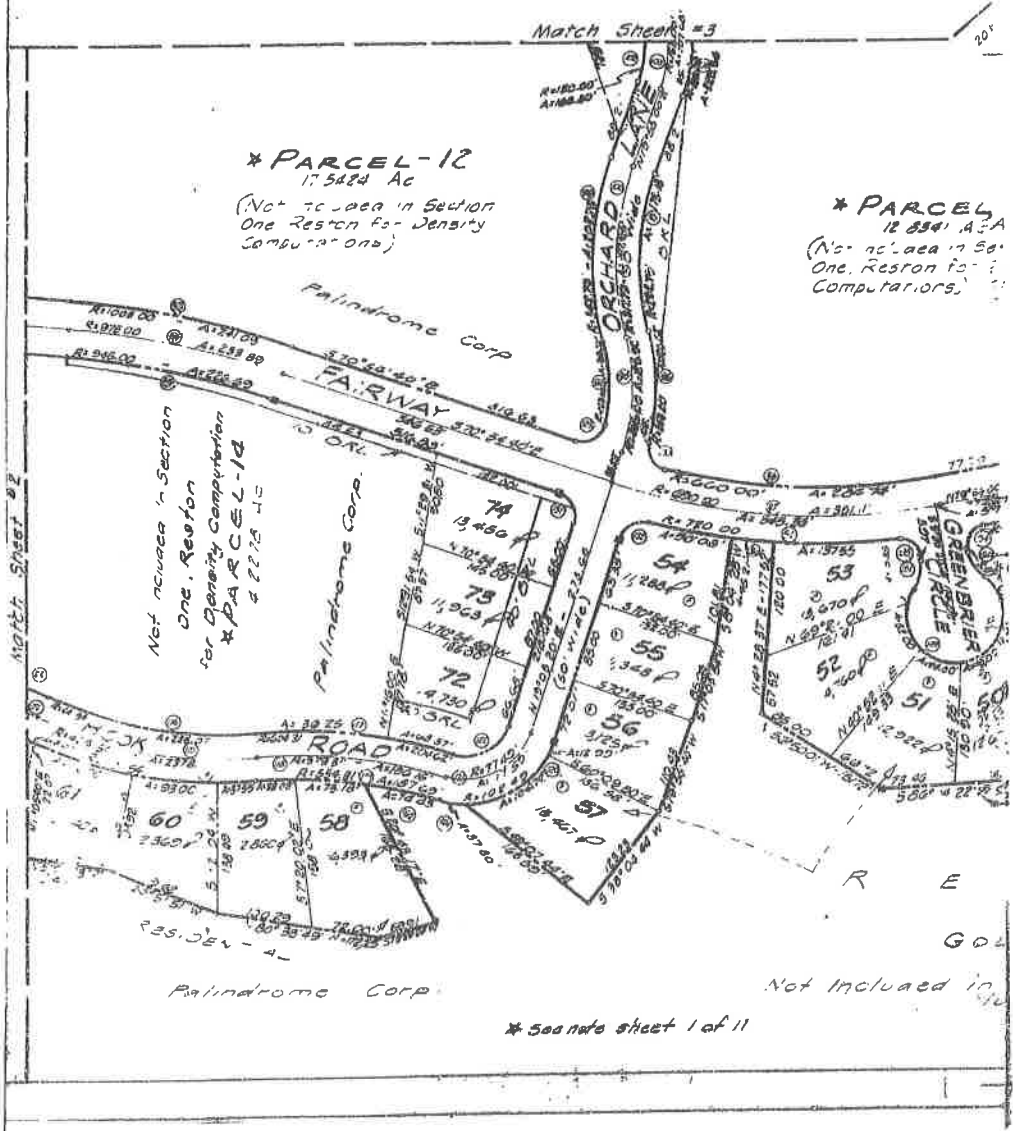
Easements for the installation and maintenance of underground utilities supply and transmission lines and drainage facilities are reserved to Palindrome Corporation and assigns through all areas shown on the attached plat, whether within the boundaries of residential lots or common areas, except only approved building and driveway areas. Such easements shall include the right of ingress and egress provided that any damage resulting from the installation, maintenance or repair of an underground utility, supply and transmission lines or drainage facility shall be promptly repaired or replaced at the expense of the corporation or authority which directed the entry.

Note B  
This parcel constitutes open space required by Section 30-682 of the Zoning Ordinance of Fairfax County. This parcel may not be subdivided, built upon, altered or modified except after an amended final plan has been approved as provided in Section 30-682 (2)(3) of the Zoning Ordinance.

Note C  
Outlots A & B are easements for public walkway purposes to be owned and maintained by Reston First Home Owners Association.

\*\* walkway to be constructed if Required when adjoining property is developed.

1/4 State G-1-a



\* PARCEL-12  
17.5424 Ac  
(Not to be used in Section One Reston for Density Combinations)

\* PARCEL  
12 8941 A2A  
(Not to be used in Section One, Reston for Computers)

Not shown in Section One, Reston for Density Combinations \* PARCEL-12 4.2275 Ac

Palindrome Corp.

Not Included in

\* See note sheet 1 of 11



has supply  
location  
1.00  
1.00  
finance  
50  
ation

Lake available for use by members of  
First Home Owners Assoc. - 07 1 0 0  
of Reston for boating and fish

\*PARCEL 10  
27.8034 Ac.

LAKE

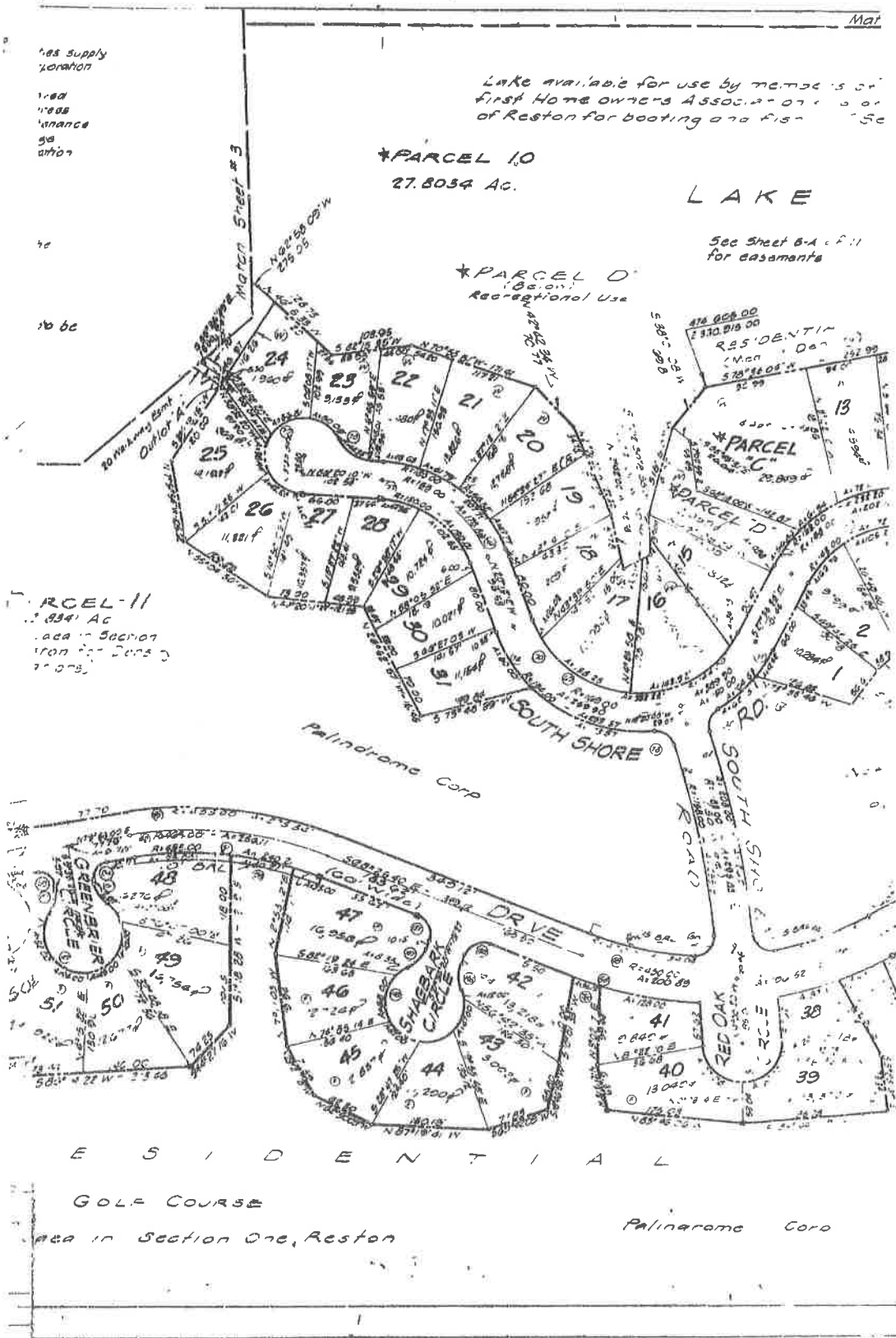
See Sheet 6-A of 11  
for easements

\*PARCEL 0  
Recreational Use

to

to be

PARCEL 11  
1.934 Ac  
area in Section  
One for Dens  
1975

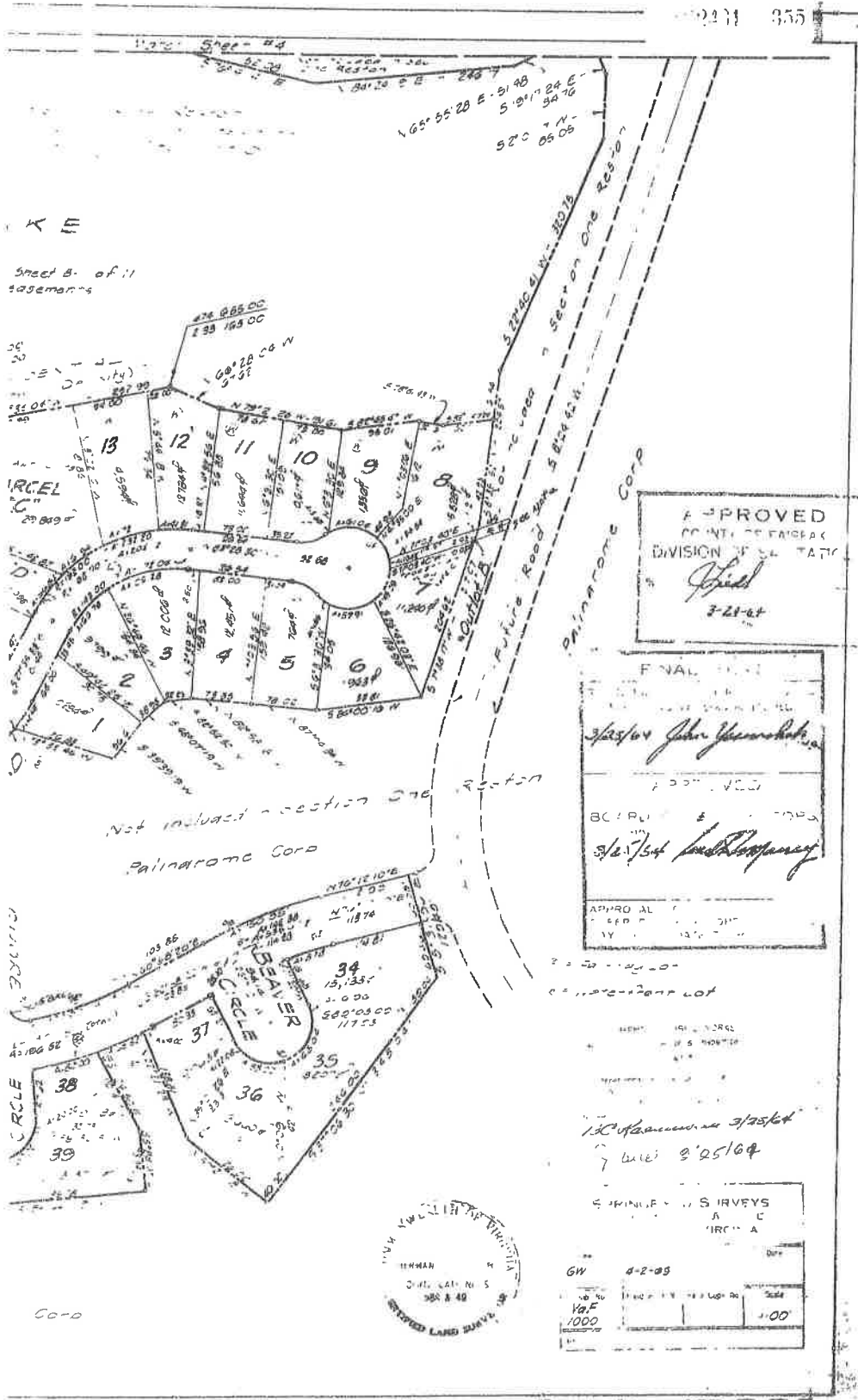


R E S I D E N T I A L

GOLF COURSE

Area in Section One, Reston

Palinrome Corp



Sheet B. of 11  
together

APPROVED  
COUNTY ENGINEER  
DIVISION OF STATE  
*[Signature]*  
7-21-64

FINAL  
*[Signature]*  
APPROVED  
BCIRP  
*[Signature]*  
APPROVAL  
SEP 7 1964

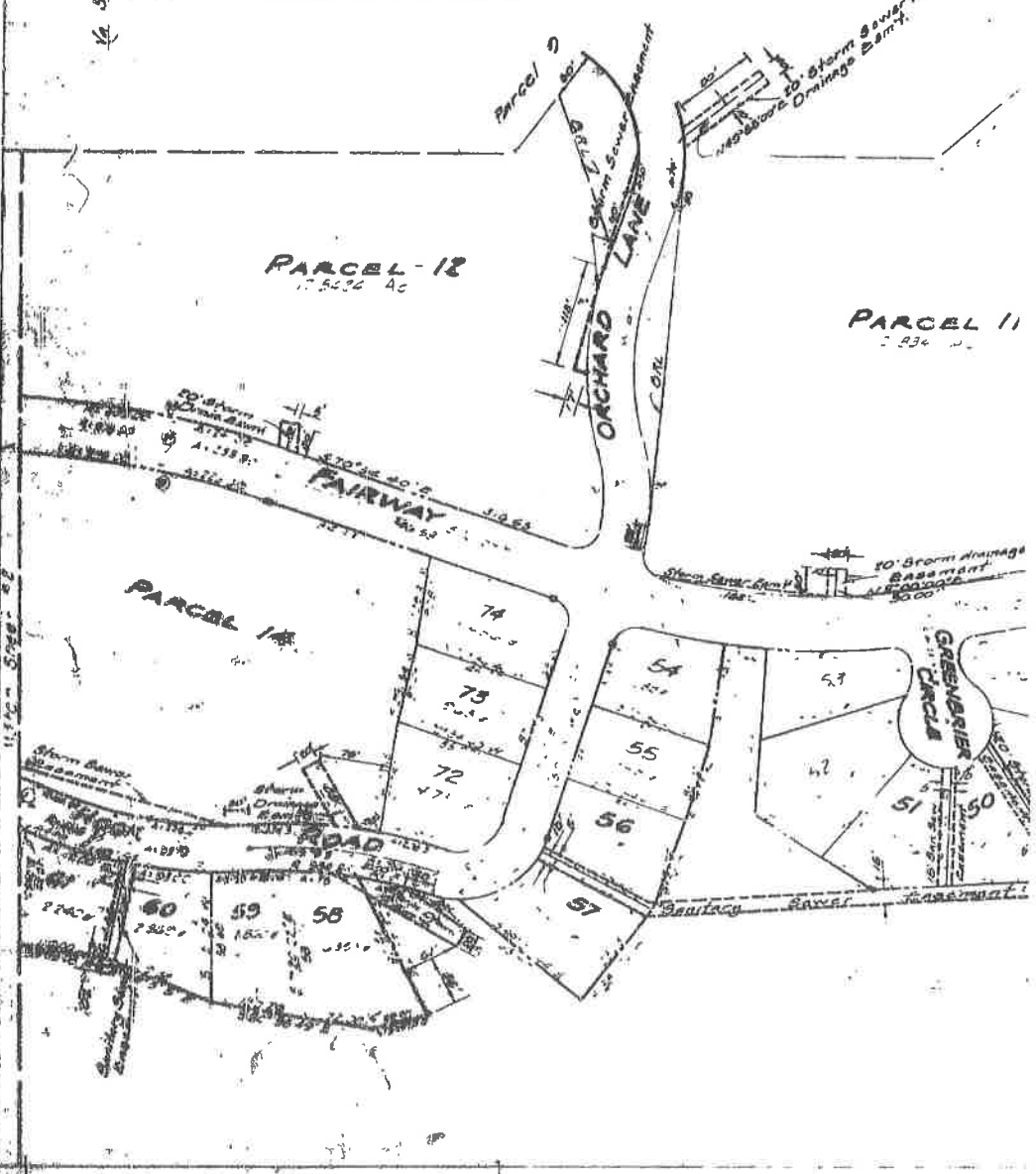


CONFIRMED BY SURVEYS  
A C  
MIRCHA  
GW 4-2-65  
Scale 1:00

Essentials for the right and...  
 and...  
 the boundary...  
 do...  
 and...  
 facility...  
 or... which...

Note E  
 Note C  
 Home On... Ass...

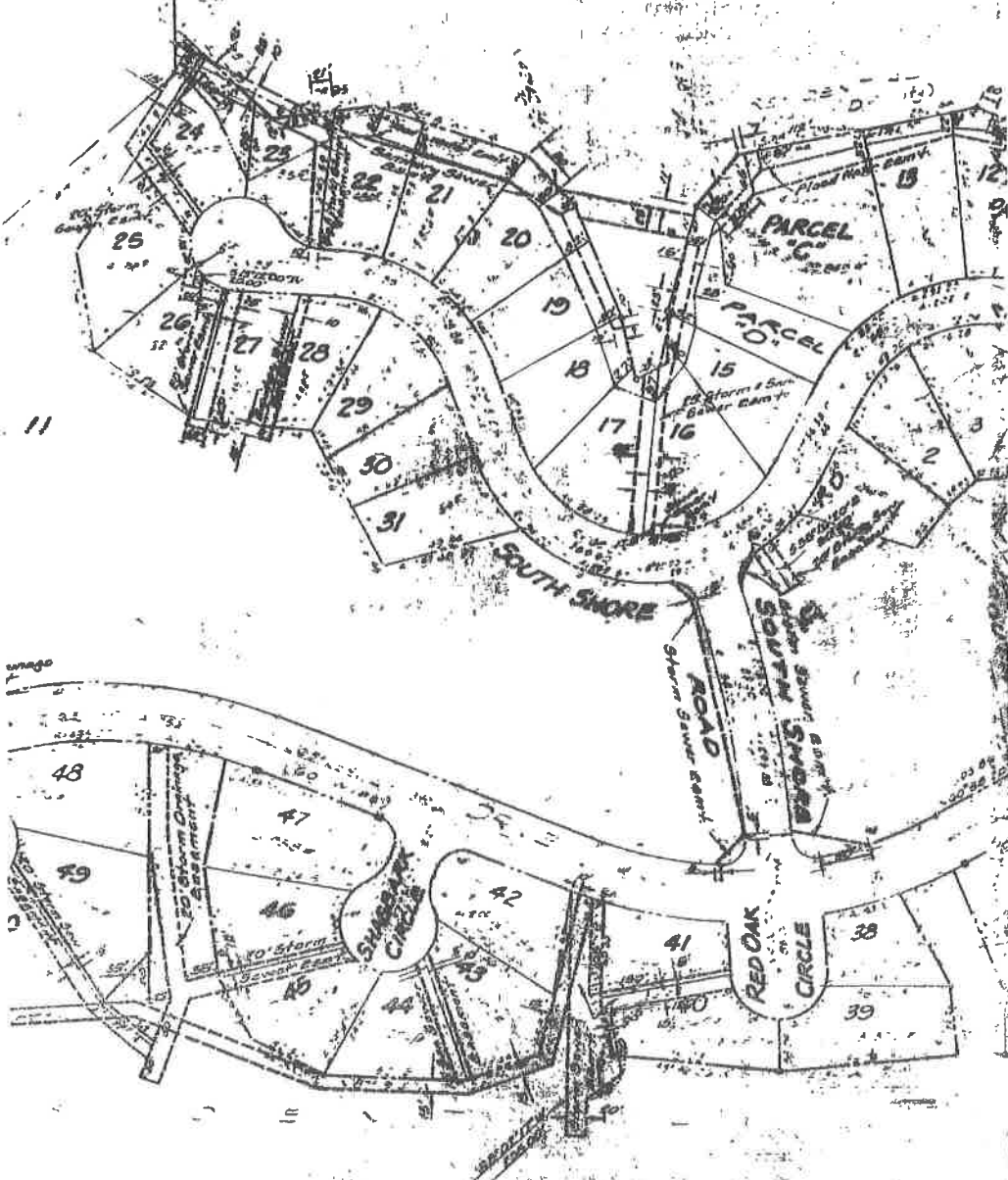
1/4 State Grid



*No construction or development will be permitted within this area, plus indicating all land fill and physical improvements has been approved by appropriate county officials.*

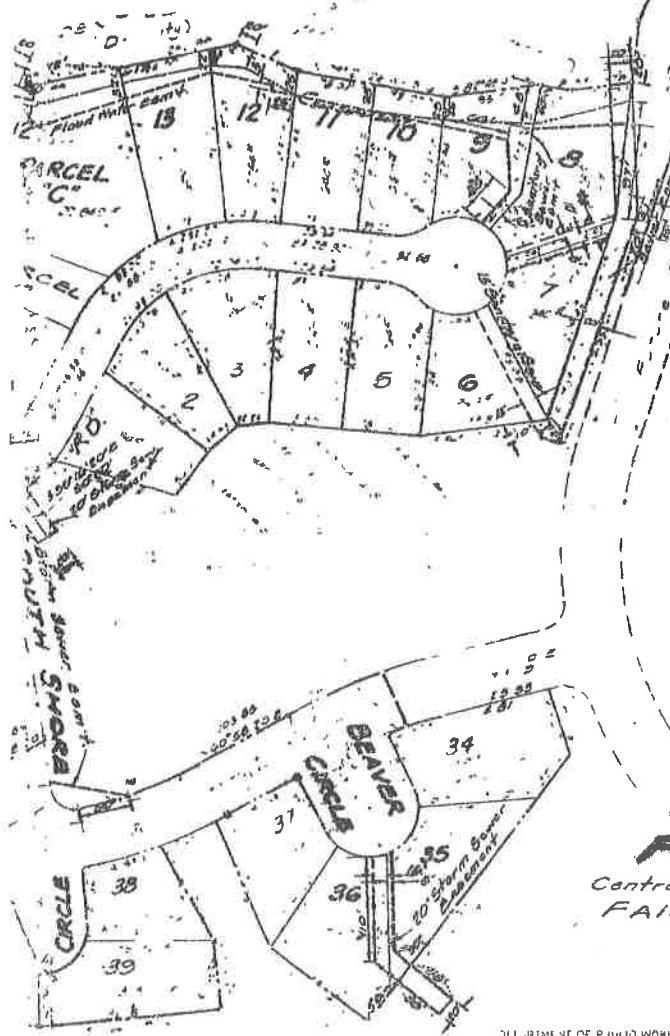
L A K E

PARCEL 10



--- Easement  
noted within this area until a complete site grading  
plan has been submitted and approved by the  
K E

EL 10



By *[Signature]*  
3-21-64

FINAL PLAN  
RECOMMENDED BY  
FAIRFAX COUNTY PLANNING COMMISSION  
3/25/64 *John Yasarski*  
APPROVED  
FOR  
BOARD OF SUPERVISORS  
FAIRFAX COUNTY  
3/25/64 *[Signature]*  
APPROVAL VOID IF PLAN IS NOT  
OFFERED FOR RECORD WITHIN 90  
DAYS AFTER DATE THEREOF

PLAN SHOWING  
EASEMENTS  
SECTION ONE  
**RESTON**  
Centreville Magisterial District  
FAIRFAX COUNTY, VA.

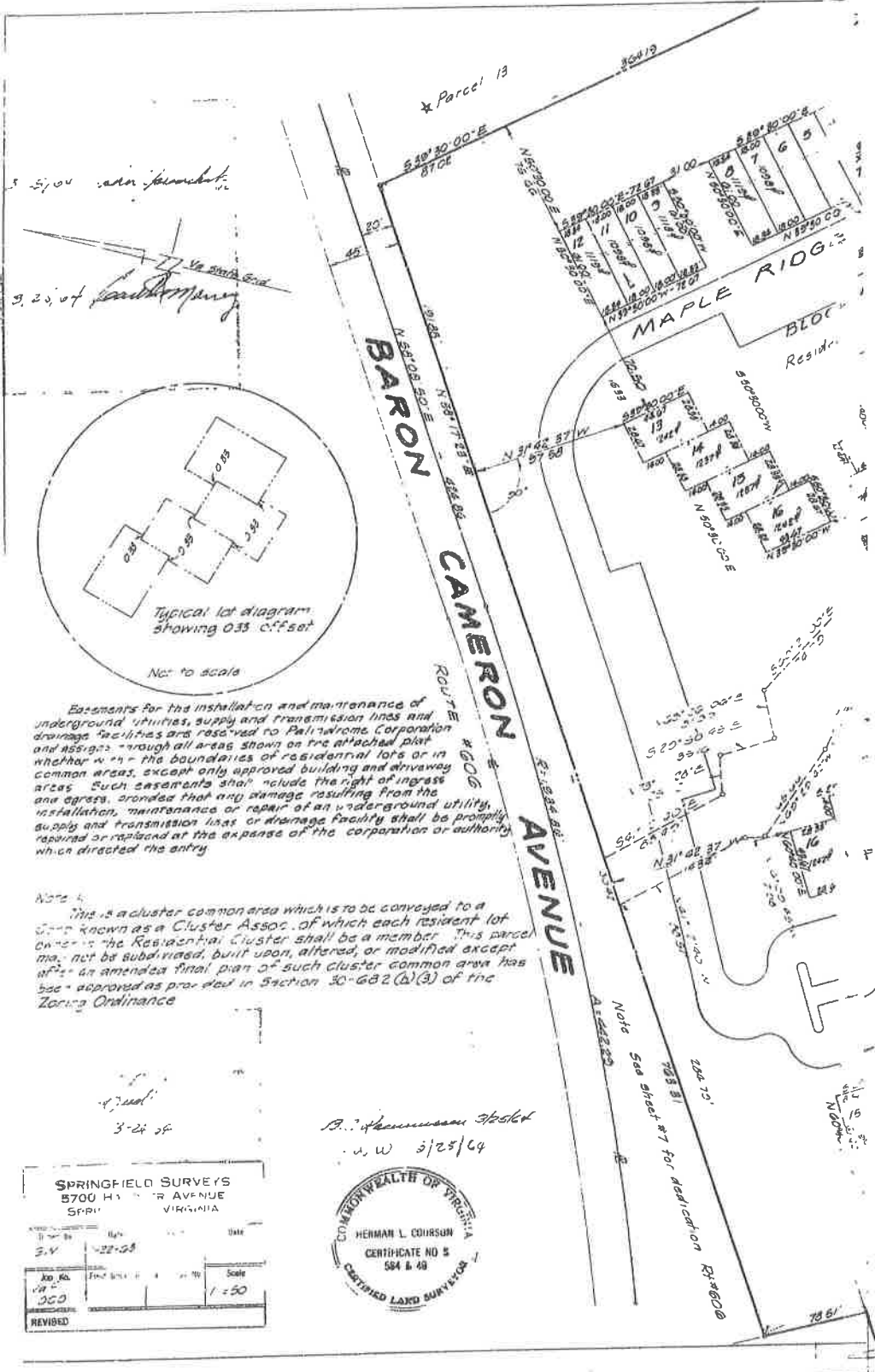
DEPARTMENT OF PUBLIC WORKS  
Division of Planning & Inspection

3/25/64  
J.W.W. 3/25/64

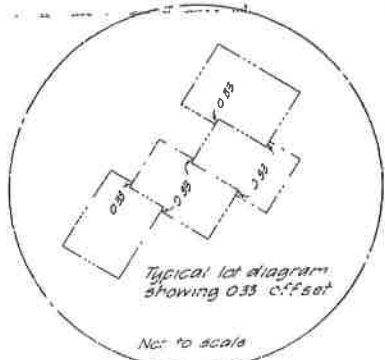
SPRINGFIELD SURVEYS  
5700 HANOVER AVENUE  
SPRINGFIELD, VIRGINIA

Drawn by	Date	Checked by	Dicty
100 Pa 244 1000	Field Book No.	Hard Copy No.	3025 1400

REVISED



5.51.04 area shown  
 9.23.04 boundary



Easements for the installation and maintenance of underground utilities, supply and transmission lines and drainage facilities are reserved to Petaluma, Corporation and assigned through all areas shown on the attached plat whether within the boundaries of residential lots or in common areas, except only approved building and driveway areas. Such easements shall include the right of ingress and egress, and that any damage resulting from the installation, maintenance or repair of an underground utility, supply and transmission lines or drainage facility shall be promptly repaired or replaced at the expense of the corporation or authority which directed the entry.

Note 4  
 This is a cluster common area which is to be conveyed to a group known as a Cluster Assoc. of which each resident lot owner in the Residential Cluster shall be a member. This parcel may not be subdivided, built upon, altered, or modified except after an amended final plan of such cluster common area has been approved as provided in Section 30-682(b)(3) of the Zoning Ordinance.

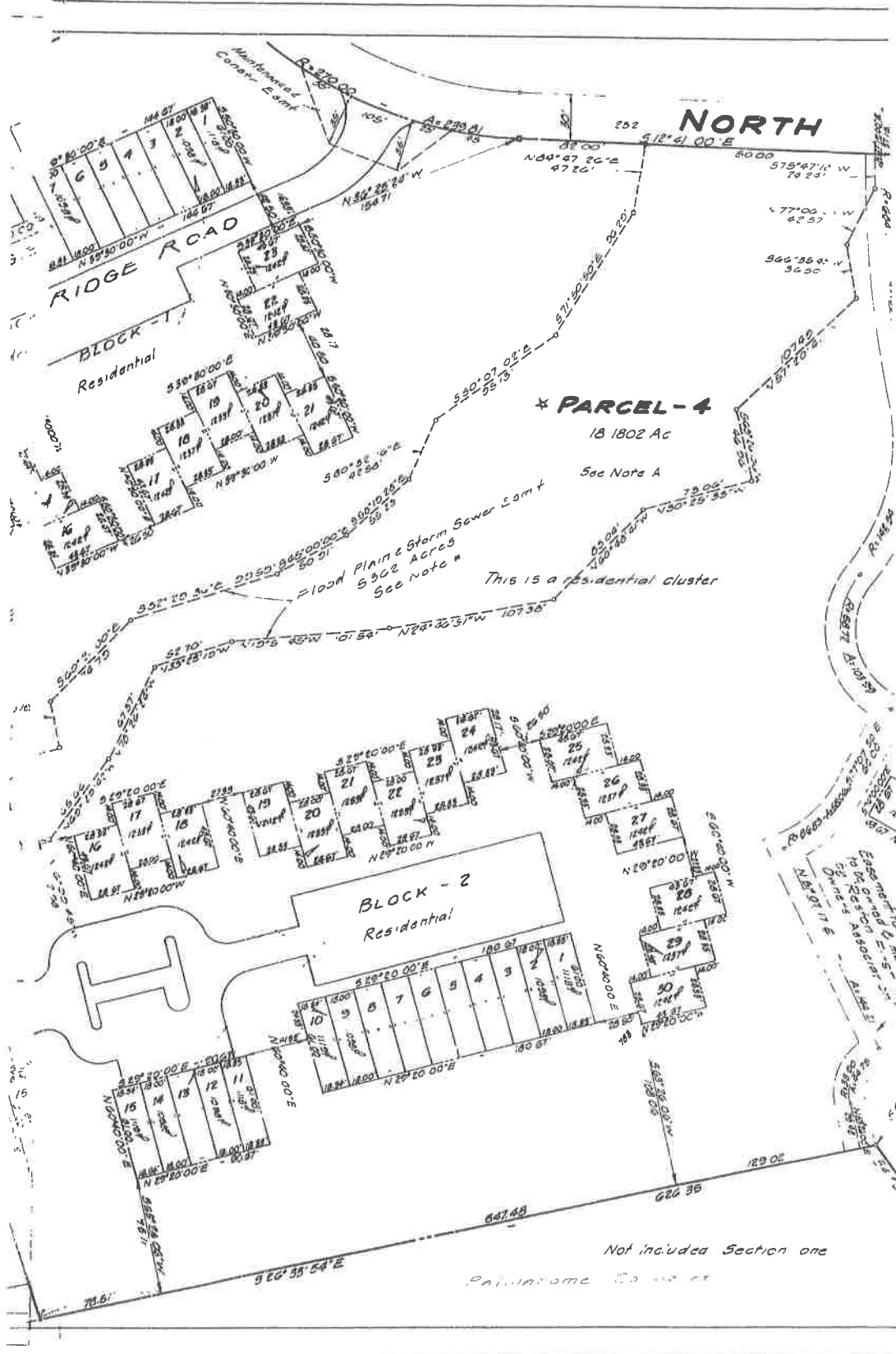
3-24-64

B. J. Thompson 3/25/64  
 W.W. 3/25/64

SPRINGFIELD SURVEYS			
5700 HARRISON AVENUE			
SPRINGFIELD, VIRGINIA			
Drawn by	Scale	Date	
S.V.	1" = 20'	12-28-63	
Job No.	Plan No.	Sheet No.	Scale
100			1" = 50'
REVISED			



Note See sheet #7 for additional plat 900G



**\* PARCEL - 4**

18 180.2 Ac

See Note A

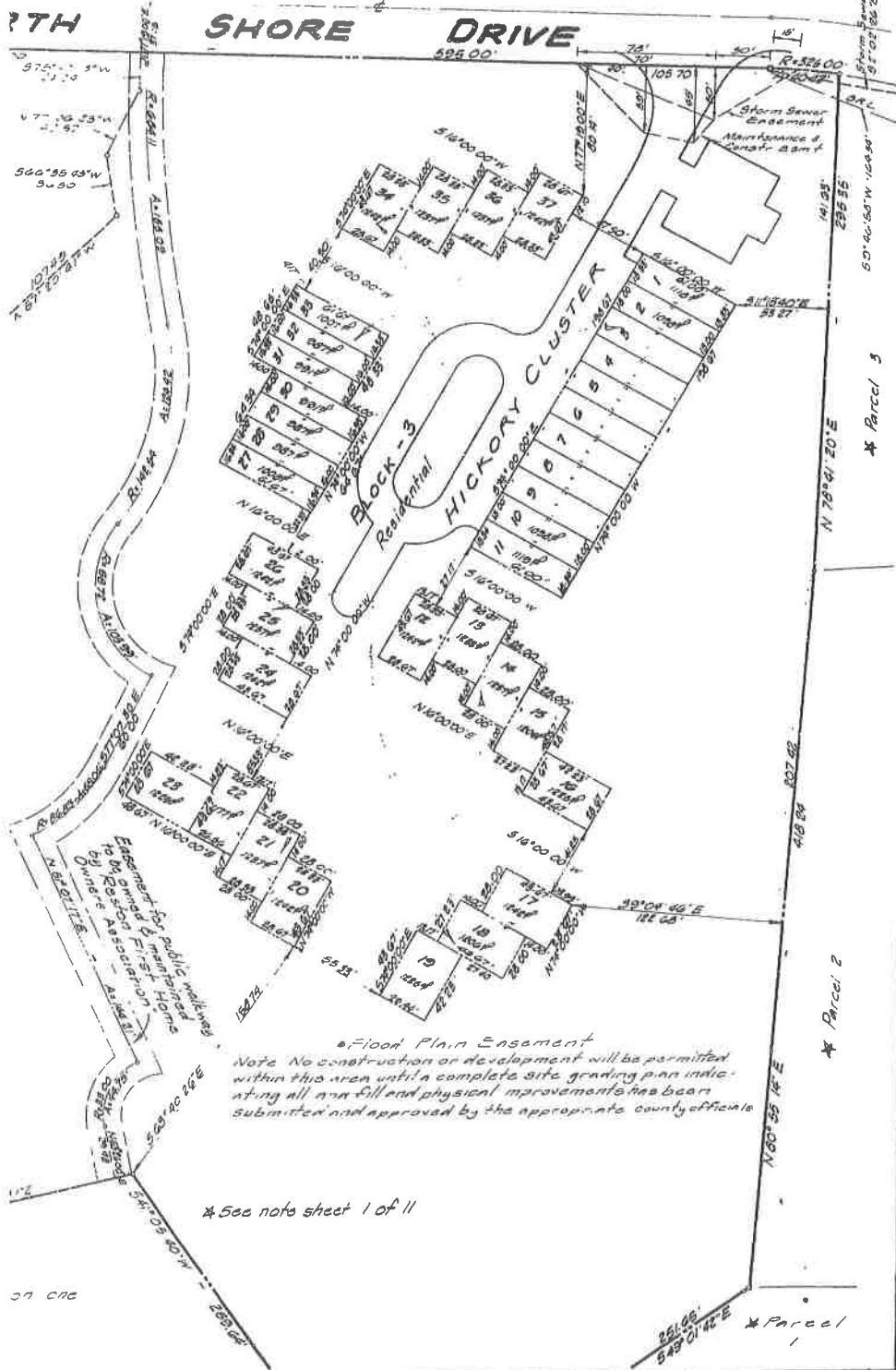
**BLOCK - 2**  
Residential

**BLOCK - 1**  
Residential

**RIDGE ROAD**

Not include Section one

Part of some ...

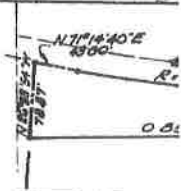


\* Flood Plain Easement  
 Note: No construction or development will be permitted within this area until a complete site grading plan indicating all area fill and physical improvements has been submitted and approved by the appropriate county officials.

\* See note sheet 1 of 11

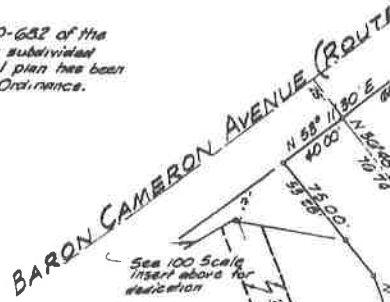


Easements for the installation and maintenance of underground utilities, supply and transmission lines and drainage facilities are reserved to Palindrome Corporation and easements through all areas shown on the attached plat whether within the boundaries of residential lots or in common areas, except only approved building and driveway areas. Such easements shall include the right of ingress and egress, provided that any damage resulting from the installation, maintenance or repair of an underground utility, supply and transmission lines or drainage facility shall be promptly repaired or replaced at the expense of the corporation or authority which directed the entry.



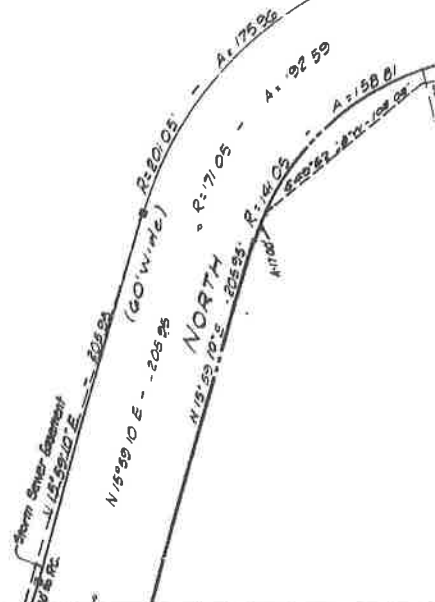
Note B

This parcel constitutes open space required by Section 30-632 of the Zoning Ordinance of Fairfax County. This parcel may not be subdivided, built upon, altered, or modified except after an amended Final plan has been approved as provided in Section 30-632 (b) 3) of the Zoning Ordinance.



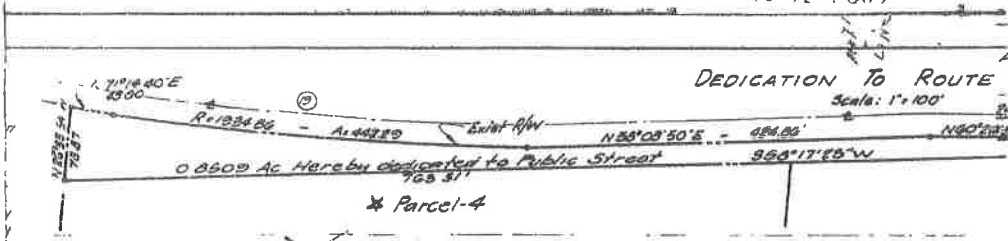
\* PARCEL 13  
(Not Included)

Palindrome Corp

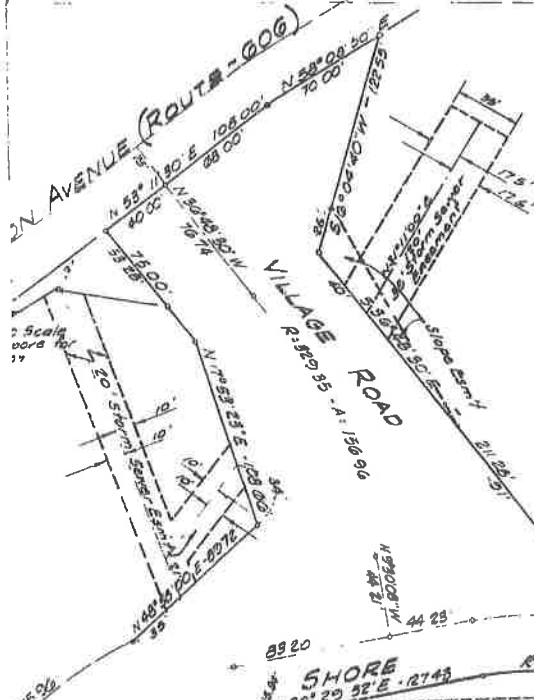


DEDICATION TO ROUTE

Scale: 1"=100'

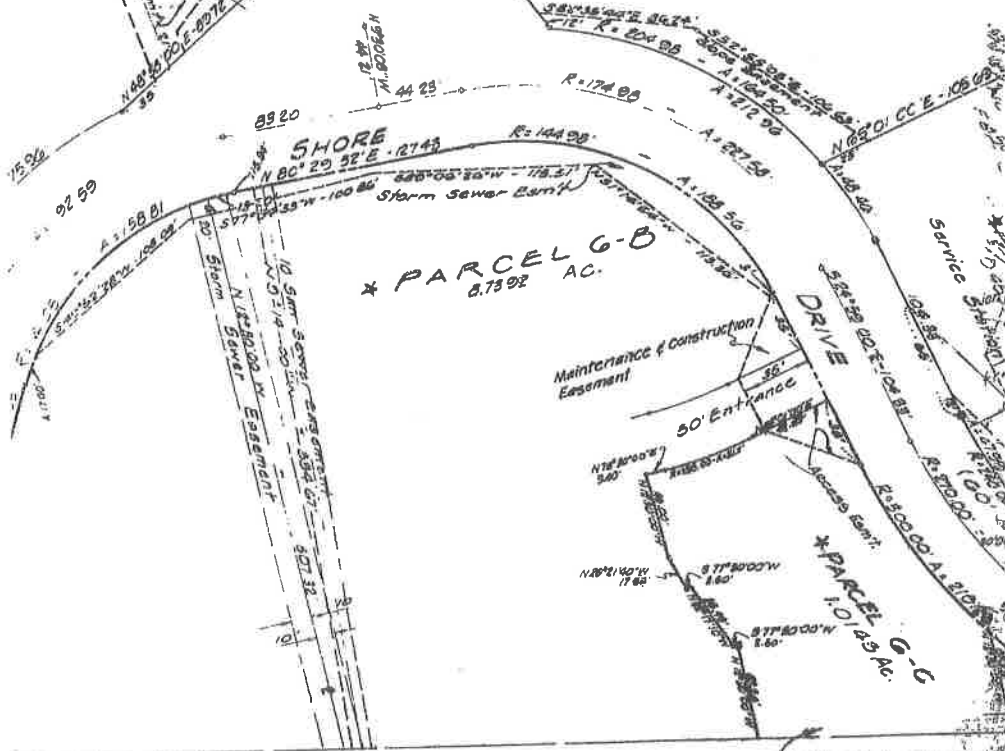


\* Parcel-4



Not Included in Section One, Reston

Palindrome Corp



\* PARCEL G-B  
8.7592 AC.

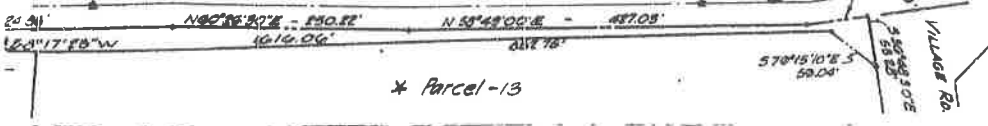
\* PARCEL G-C  
1.0143 AC.

Match Line  
\* See next sheet 1 of 11

OFF 2431 1364

### SECTION TO ROUTE #606

Scale: 1" = 100'

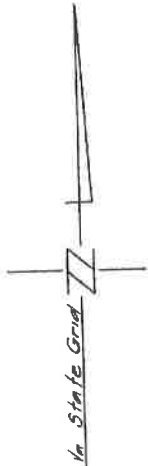


\* Parcel-13

VILLAGE RD.  
50' 00\"/>

Section One, Reston

Windrome Corp.



DEPARTMENT OF PUBLIC WORKS  
Division of Street Design & Inspection  
Fairfax, Virginia

All street locations and/or easements conform to the requirements of this office and the necessary zoning and other applicable laws and ordinances.

*H.C. Hammond 3/25/64*  
Date: 3/25/64

**APPROVED**  
COUNTY OF FAIRFAX  
DIVISION OF SANITATION

*[Signature]*  
3-25-64  
Date

**FINAL PLAN**

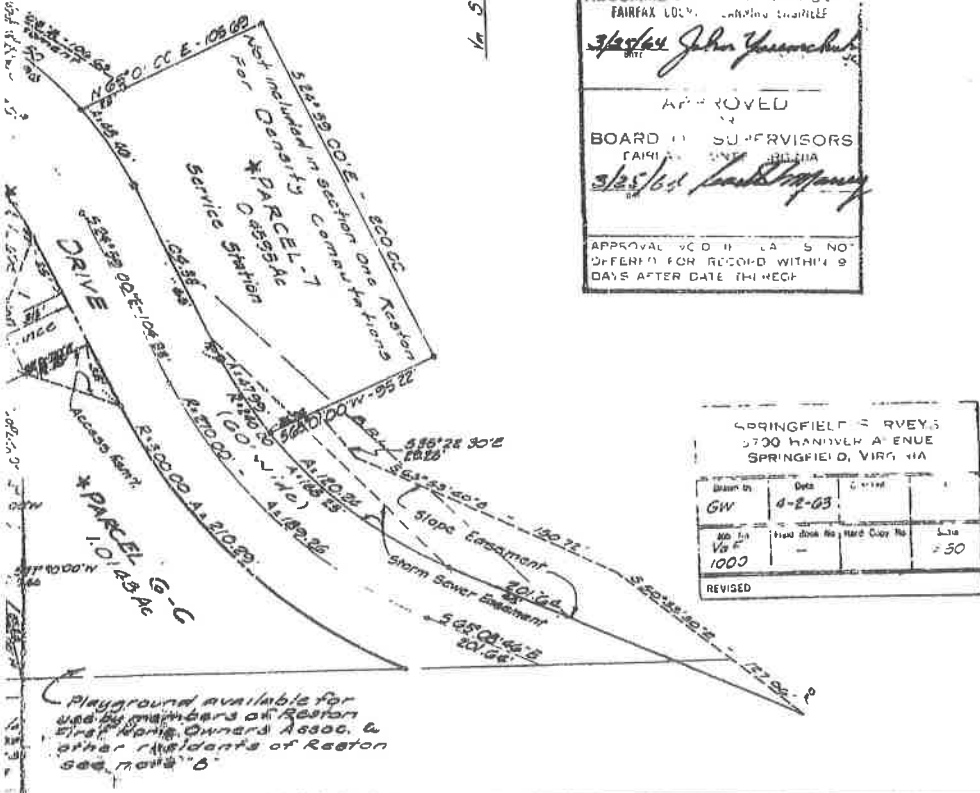
RECOMMENDED BY  
FAIRFAX COUNTY ENGINEER

*[Signature]*  
3/25/64

**APPROVED**  
BY  
BOARD OF SUPERVISORS  
FAIRFAX COUNTY, VIRGINIA

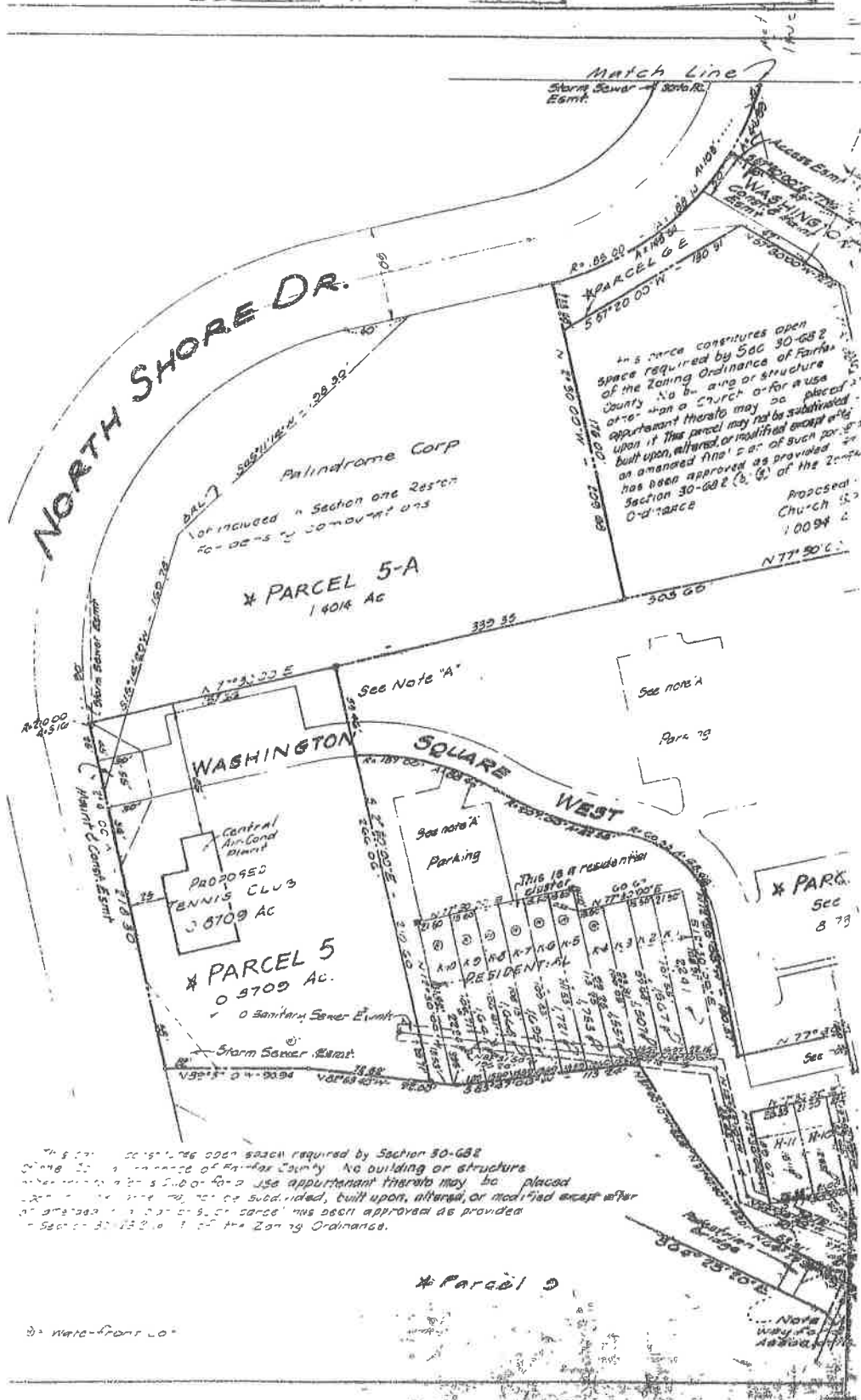
*[Signature]*  
3/25/64

APPROVAL VOID IF A SIGN OFFERED FOR RECORD WITHIN 9 DAYS AFTER DATE HEREOF



SPRINGFIELD SURVEYS  
2700 HANOVER AVENUE  
SPRINGFIELD, VIRG. VA

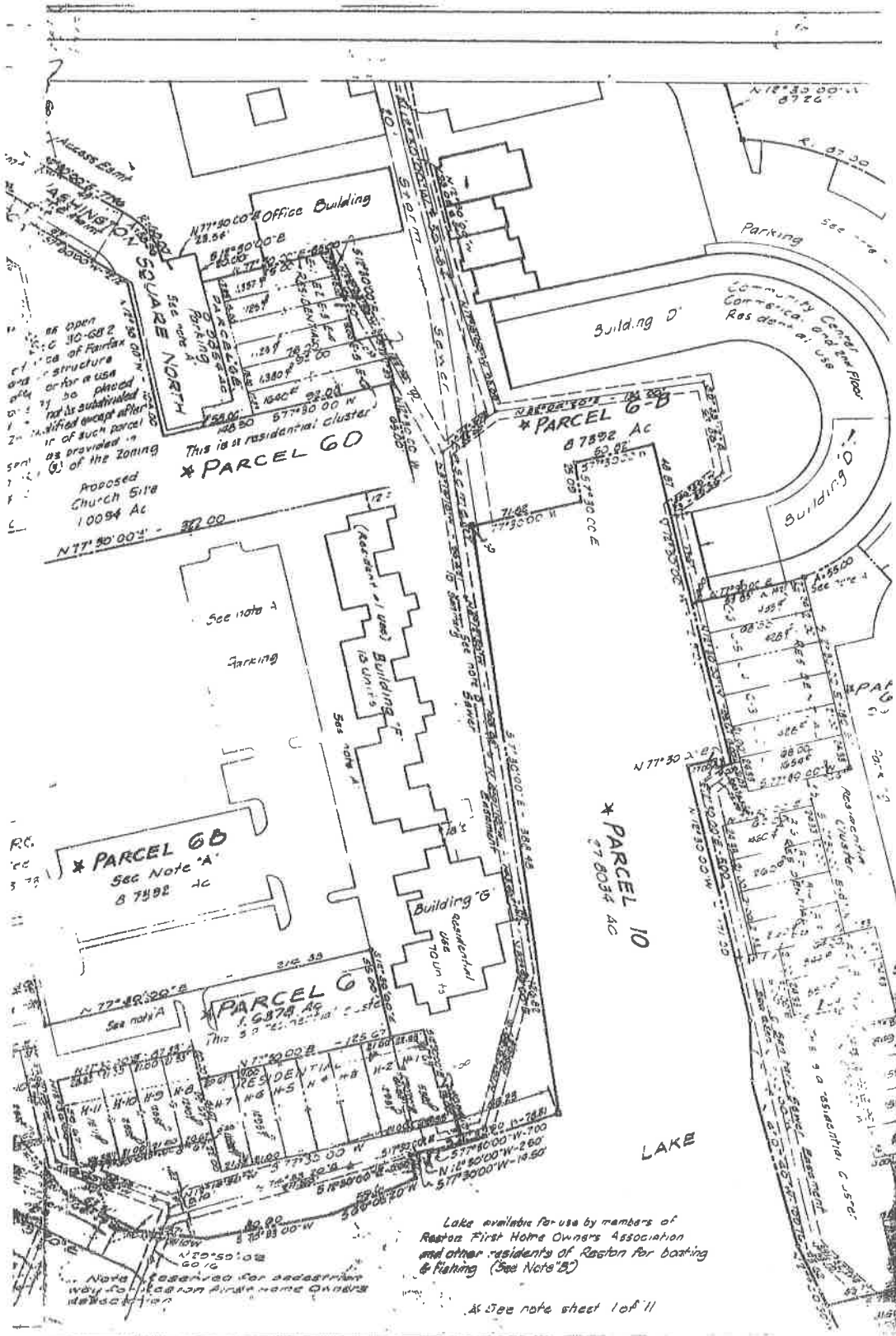
Drawn By	Date	Checked	
GW	4-2-63		
Map No.	Field Book No.	Hard Copy No.	Scale
1000			1" = 50'
REVISED			



This site is subject to the open space required by Section 30-00-2 of the Zoning Ordinance of Fairfax County. No building or structure other than the tennis club use appurtenant thereto may be placed upon the site, nor be subdivided, built upon, altered, or modified except after an amended final plat of such parcel has been approved as provided in Section 30-00-2 (3, 6) of the Zoning Ordinance.

\* Parcel 9

See note-front lot



Proposed Church Site  
10094 Ac  
N77°30'00" E 32.00'

This is a residential cluster  
\* PARCEL 6D

\* PARCEL 6A  
See Note A  
87992 Ac

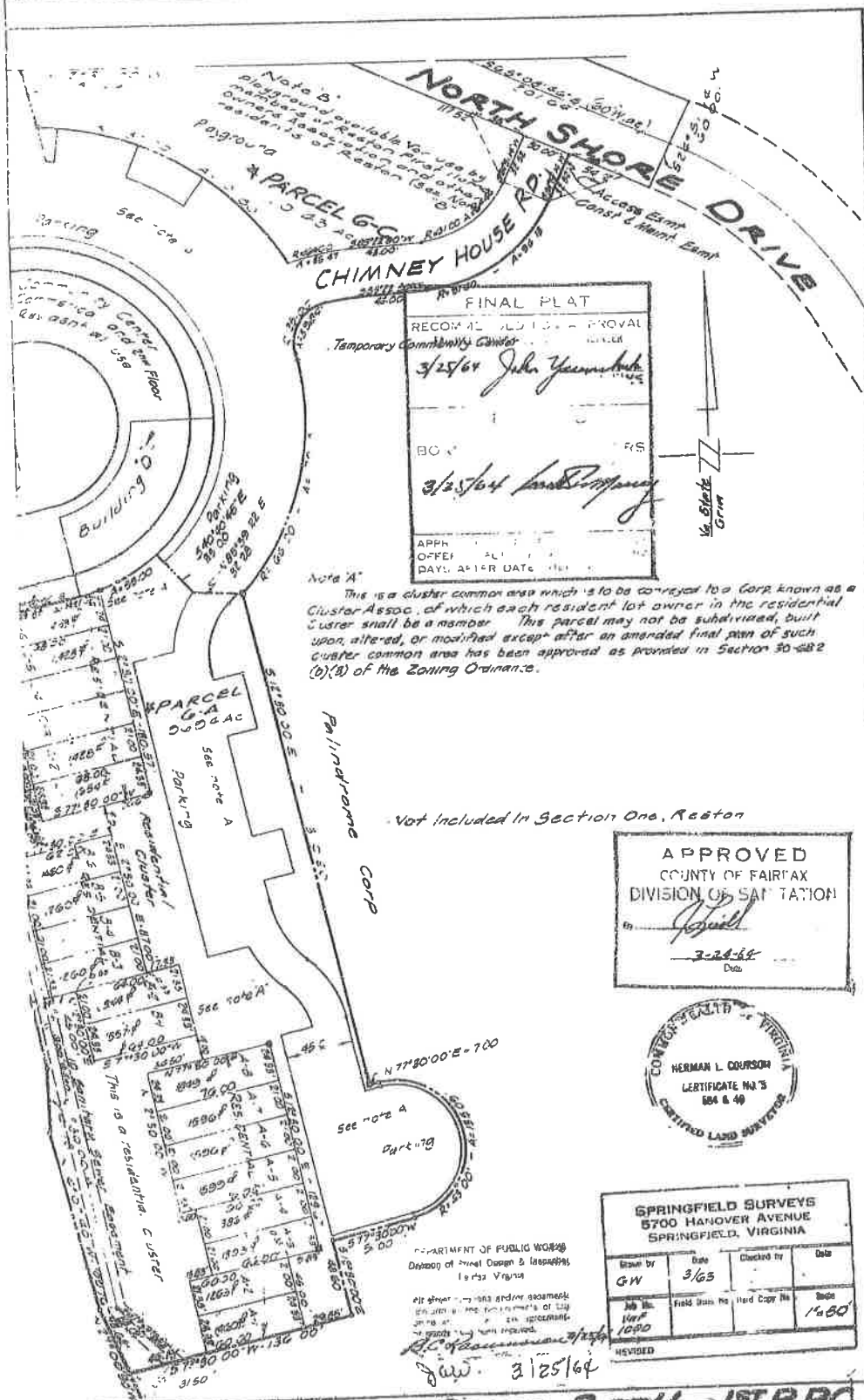
\* PARCEL 6  
1.6378 Ac

\* PARCEL 6-B  
87892 Ac

\* PARCEL 10  
87004 Ac

Lake available for use by members of Reston First Home Owners Association and other residents of Reston for boating & fishing (See Note B)

See note sheet 1 of 11



FINAL PLAT  
 RECOMMENDED FOR APPROVAL  
 Temporary Community Center  
 3/25/64 John Yarnall  
 BO... RS  
 3/25/64 [Signature]  
 APPL...  
 OFFER...  
 DAYL... AFTER DATE...

Note A  
 This is a cluster common area which is to be conveyed to a Corp known as Cluster Assoc. of which each resident lot owner in the residential cluster shall be a member. This parcel may not be subdivided, built upon, altered, or modified except after an amended final plat of such cluster common area has been approved as provided in Section 30-282 (b)(3) of the Zoning Ordinance.

Not included in Section One, Reston

APPROVED  
 COUNTY OF FAIRFAX  
 DIVISION OF SURVEYING  
 [Signature]  
 3-24-64  
 Date



DEPARTMENT OF PUBLIC WORKS  
 Division of Street Design & Inspection  
 Fairfax, Virginia

all street... and/or easements...  
 [Signature] 3/25/64

SPRINGFIELD SURVEYS  
 5700 HANOVER AVENUE  
 SPRINGFIELD, VIRGINIA

Drawn by	Date	Checked by	Date
GW	3/63		
Job No.	Field Book No.	Hard Copy No.	Scale
1090			1"=60'

REVISED

Easements for the installation and maintenance of underground utilities, supply and transmission lines and drainage facilities are reserved to Fallstrom Corporation and assigns through all areas shown on the attached plat whether within the boundaries of residential lots or in common areas, except only approved building and driveway areas. Such easements shall include the right of ingress and egress, provided that any damage resulting from the installation, maintenance or repair of an underground utility, supply and transmission lines, or drainage facility shall be promptly repaired or replaced at the expense of the corporation or authority which directed the entry.

Notes 'B'

This parcel constitutes open space required by Section 30-682 of the Zoning Ordinance of Fairfax County. This parcel may not be subdivided, built upon, altered, or modified except after an amended final plan has been approved as provided in Section 30-682 (b)(3) of the Zoning Ordinance.

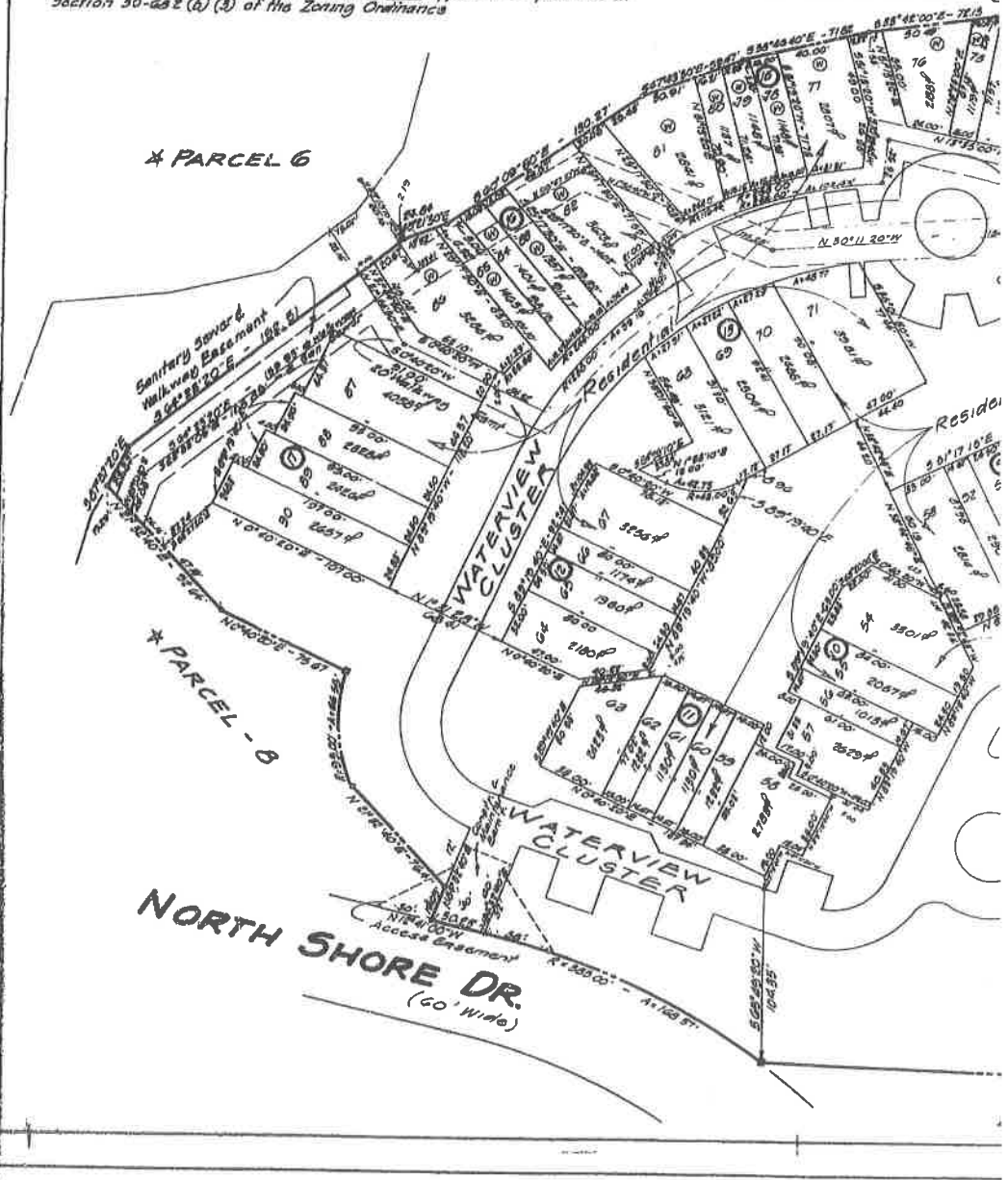
Notes 'A'

This is a cluster common area which is to be conveyed to a corporation known as a Cluster Association, of which each resident lot owner in the Residential Cluster shall be a member. This parcel may not be subdivided, built upon, altered, or modified except after an amended final plan of such cluster common area has been approved as provided in Section 30-682 (b) (3) of the Zoning Ordinance.

REC'D  
3/25/64 John Yu

BOARD  
3/25/64 Lamb

Lak... members of Reston is owners assoc and aff. of Reston for boating

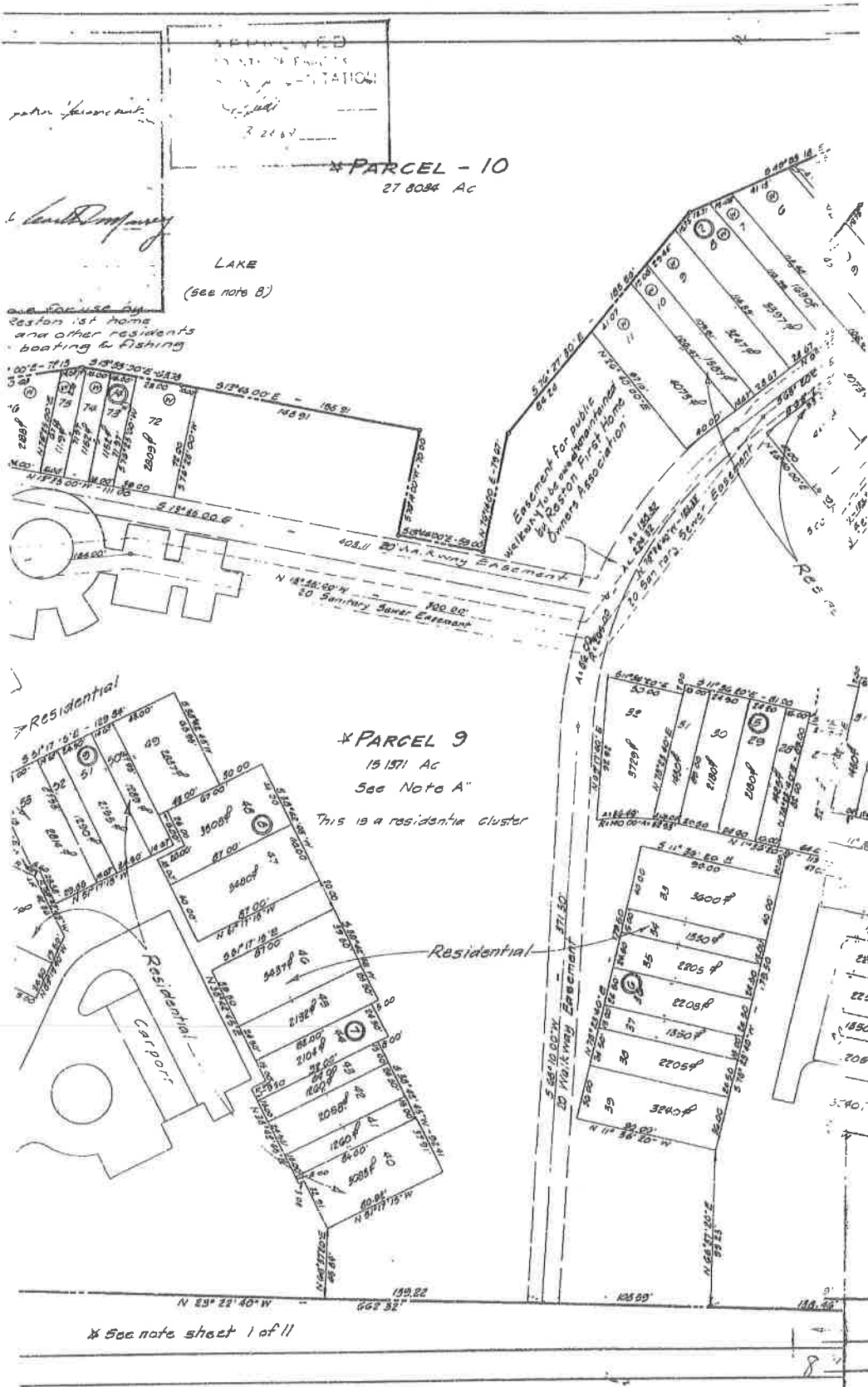


\* PARCEL 6

\* PARCEL - 8

NORTH SHORE DR.  
(60' Wide)





\* PARCEL - 10  
27 8084 Ac

LAKE  
(see note B)

Portion 1st Home  
and other residents  
boating & fishing

Easement for Public  
Walkway to be administered  
by Rosson First Home  
Owners Association

\* PARCEL 9  
15 1571 Ac  
See Note A

This is a residential cluster

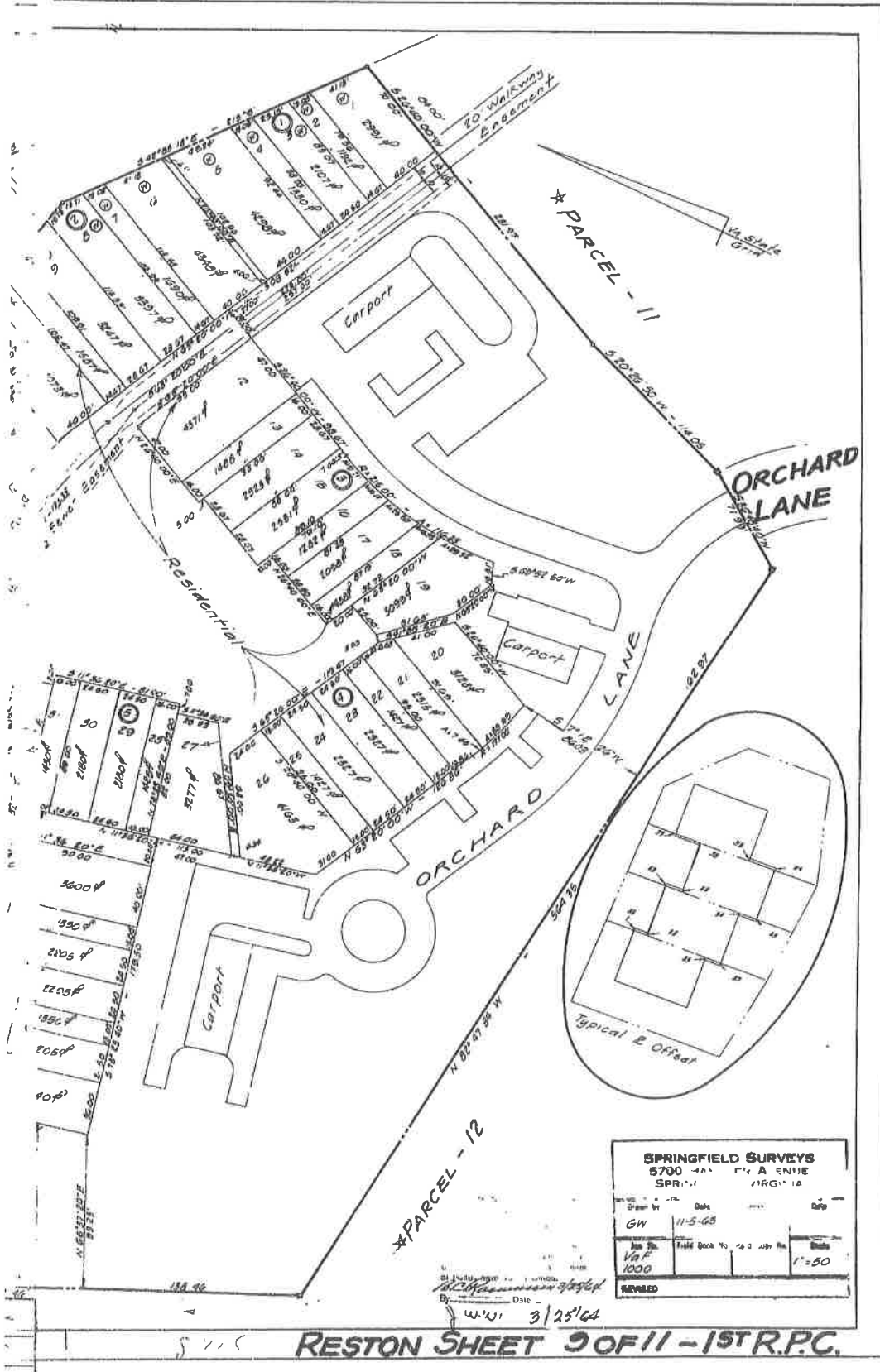
Residential

Residential

Residential  
Cap. Port

\* See note sheet 1 of 11





# CURVE DATA

No	Chord	Delta	Arc	Tan	Chord	Ch Bearing
1	235 00	49° 40' 00"	420 42	224 44	407 38	N68°44'10"E
2	5 5 00	40° 40' 00"	446 43	238 33	432 68	N63°44'10"E
3	545 00	40° 40' 00"	472 43	252 21	457 78	N63°44'10"E
4	480 00	45° 10' 00"	378 39	199 64	368 67	N61°20'40"E
5	450 00	45° 10' 00"	354 72	187 16	348 62	N61°20'40"E
6	420 00	50° 25' 30"	280 00	150 40	283 33	S58°37'28"W
7	375 00	56° 45' 40"	548 86	365 81	486 82	N35°41'50"E
8	355 00	56° 45' 40"	500 52	400 75	531 46	N35°41'50"E
9	385 00	56° 45' 40"	660 10	488 34	575 63	N35°41'50"E
10	270 00	60° 18' 00"	420 82	366 72	370 50	N31°58'00"E
11	240 00	60° 18' 00"	374 06	237 00	337 83	N31°58'00"E
12	210 00	60° 18' 00"	327 30	207 45	295 17	N31°58'00"E
13	125 00	60° 37' 50"	132 28	73 00	126 10	N48°18'08"E
4	188 00	60° 37' 50"	168 02	90 63	136 47	N48°18'08"E
5	155 00	60° 37' 50"	105 77	108 17	186 76	N66°18'08"E
6	175 00	60° 37' 50"	175 06	94 02	170 30	N61°03'20"E
17	105 00	60° 37' 50"	57 30	107 95	182 50	N68°18'31"E
18	124 05	63° 30' 42"	58 31	120 07	150 94	N63°18'31"E
19	105 00	63° 30' 42"	54 20	122 11	131 33	N64°41'32"E
20	320 35	27° 3' 27"	56 06	30 00	56 44	S75°09'10"E
21	350 20	60° 24' 41"	666 30	380 92	626 30	N41°07'41"W
22	44 00	78° 3' 03"	33 56	0 38	179 55	S67°18'35"E
23	76 00	78° 3' 03"	57 50	133 10	211 03	S67°18'35"E
24	204 00	50° 3' 03"	212 06	117 22	203 51	S64°44'05"E
25	300 00	60° 00' 00"	300 00	100 00	300 00	S45°00'00"E
26	270 00	60° 00' 00"	270 00	08 71	135 41	S65°03'53"E
27	240 00	60° 00' 00"	240 00	87 74	163 31	S45°03'53"E
28	560 00	56° 32' 20"	542 73	295 77	620 98	N36°41'30"W
29	520 00	74° 14' 00"	710 02	422 84	636 16	N45°32'20"W
30	490 00	74° 14' 00"	660 06	390 45	618 28	N45°32'20"W
31	1005 00	13° 44' 40"	241 00	121 12	240 31	N77°47'00"W
32	975 00	13° 44' 40"	233 60	117 31	233 33	N77°47'00"W
33	945 00	13° 44' 40"	226 40	113 80	226 15	N77°47'00"W
34	660 00	24° 43' 06"	234 74	186 42	282 83	N37°42'27"W
35	630 00	20° 00' 20"	351 11	170 48	347 34	N35°20'20"W
36	435 00	31° 38' 20"	240 21	128 25	237 17	N34°18'50"W
37	465 00	31° 38' 20"	256 77	181 75	255 52	N34°18'50"W
38	495 00	31° 38' 20"	273 34	230 25	260 05	N32°36'30"W
39	220 00	77° 26' 05"	30 25	65 65	120 73	N60°51'27"E
40	220 00	18° 17' 08"	134 04	47 50	133 47	S44°08'59"W
41	330 00	50° 36' 00"	307 41	212 71	386 82	S36°16'20"W
42	720 00	31° 42' 33"	272 81	193 07	271 20	S35°36'53"E
43	480 00	13° 35' 55"	144 19	62 90	163 30	S 78° 18' 87"E
44	460 00	10° 02' 31"	159 53	60 31	198 70	S 70° 20' 35"W
45	565 60	15° 13' 50"	150 35	75 62	140 01	N68°35'15"E
46	535 60	15° 13' 50"	142 36	71 61	141 06	N68°35'15"E
47	50 00	160° 00' 00"	57 08	-	100 00	N68°35'40"E
48	505 60	6° 33' 04"	57 31	28 04	67 78	N78°58'30"E
49	50 00	20° 00' 00"	220 33	-	-	-
50	30 00	41° 24' 25"	36 13	18 00	35 35	N 75° 40' 17 E
51	30 00	81° 24' 25"	36 13	18 00	35 35	S 62° 46' 17 E
52	03 00	68° 55' 54"	232 20	182 40	218 44	S 67° 03' 33"W
53	03 00	68° 55' 54"	202 2	115 32	90 15	S 62° 03' 33"W
54	43 00	68° 55' 54"	72 04	28 9	121 35	S 62° 03' 33"W
55	64 00	132° 1' 2	332 22	324 85	263 20	N 06° 18' 43"W
56	65 00	32°	310 00	381 25	300 00	N 06° 18' 43"W
57	26 00	30° 58' 03"	04 63	53 62	103 37	S 63° 02' 30"W
58	25 00	76° 0' 23"	83 22	0 68	30 83	N 20° 25' 50 E
59	28 00	77° 32' 23"	33 83	20 08	31 31	S 36° 20' 10"E
60	24 00	74° 53' 0	253 07	148 56	235 00	S 37° 30' 52"E
61	40 00	60° 00' 00"	207 7	117 16	196 30	N 33° 16' 41"W
62	30 00	60° 00' 00"	78 86	100 88	169 10	N53°16'41"W
63	30 00	60° 00' 00"	30 0	68 61	161 33	N 33° 16' 41"W
64	50 00	60° 00' 00"	52 36	88 87	50 00	N 36° 20' 10"W
65	50 00	240° 00' 00"	806 44	-	-	-
66	25 00	78° 7' 50"	22 15	21 65	37 80	S44°10'47"W
67	25 00	56° 24' 32"	22 06	27 07	37 78	S53°08'10"E
68	201 00	1° 30' 31"	229 21	135 27	264 35	S 11° 14' 58"E
69	83 00	1° 30' 31"	225 33	140 60	255 06	N 11° 10' 10"W
70	158 00	1° 30' 31"	253 31	28 27	254 20	S 11° 14' 58"E
71	93 00	1° 30' 31"	32 5	31 34	61 89	S30°57'38"W

No	Radius	Delta
56	103 00	26° 20' 08"
57	216 00	33° 02' 40"
58	243 00	28° 20' 20"
59	562 70	33° 53' 20"
100	317 70	33° 53' 20"
101	292 70	33° 53' 20"
102	130 00	73° 04' 20"
103	155 00	73° 04' 20"
104	160 00	73° 04' 20"
105	265 00	41° 11' 00"
106	260 00	41° 11' 00"
107	215 00	41° 11' 00"
108	164 63	53° 23' 20"
109	130 63	53° 23' 20"
110	114 63	53° 23' 20"
111	401 32	21° 04' 00"
112	426 32	21° 04' 00"
113	451 32	21° 04' 00"
114	421 54	20° 12' 20"
115	446 54	20° 12' 20"
116	441 54	20° 12' 20"
117	604 31	10° 24' 00"
118	579 31	10° 24' 00"
119	554 31	10° 24' 00"
120	102 49	86° 36' 40"
121	77 49	86° 36' 40"
122	32 49	86° 36' 40"
123	204 29	45° 53' 50"
124	240 00	25° 27' 20"
125	25 00	55° 18' 30"
126	26 00	50° 30' 00"
127	25 00	84° 37' 17"
128	25 00	86° 10' 00"
129	25 00	24° 46' 31"
130	25 00	80° 47' 00"
131	25 00	80° 00' 00"
132	25 00	86° 08' 24"
133	5 00	86° 52' 45"
134	18 83	60° 31' 20"
135	50 00	180° 00' 00"
136	50 00	41° 24' 34"
137	50 00	41° 24' 34"
138	50 00	76° 40' 08"
139	50 00	76° 40' 08"
140	50 00	41° 24' 34"
141	50 00	41° 24' 34"
142	91 00	60° 31' 36"
143	106 00	34° 5'
144	43 00	180° 00' 00"
145	26 00	81° 18' 56"
146	430 00	7° 49' 15"
147	430 00	2° 13' 11"
148	435 00	10° 33' 59"
149	720 00	3° 35' 31"
150	102 49	21° 07' 46"
151	354 91	7° 41' 36"

# A DATA

No.	Radius	Delta	Arc	Tan	Chord	Ch. Bearing
96	158.00	26° 20' 08"	84.71	48.15	87.28	S00° 50' 16"E
97	218.00	35° 03' 40"	125.22	64.77	124.18	N 2° 32' 30"E
98	243.00	28° 26' 26"	120.62	61.58	110.80	N 0° 12' 55"E
99	342.70	53° 33' 20"	202.75	104.44	109.81	N 2° 56' 20"E
100	317.70	38° 53' 20"	187.06	96.82	185.24	N 2° 56' 20"E
101	292.70	53° 33' 20"	178.18	89.21	170.60	N 2° 56' 20"E
102	130.00	75° 04' 20"	103.80	56.82	134.70	N 16° 30' 10"W
103	155.00	75° 04' 20"	107.68	114.85	184.85	N 16° 30' 10"W
104	180.00	75° 04' 20"	229.56	183.37	214.82	N 16° 30' 10"W
105	205.00	41° 11' 00"	150.88	99.56	186.40	S 11° 24' 50"E
106	240.00	41° 11' 00"	175.51	90.17	168.82	S 11° 24' 50"E
107	215.00	41° 11' 00"	154.54	80.78	151.23	S 11° 24' 50"E
108	164.68	53° 23' 20"	155.41	82.78	147.01	S 53° 42' 00"E
109	189.68	53° 23' 20"	180.11	70.21	125.45	S 53° 42' 00"E
110	114.63	53° 23' 20"	106.81	57.64	102.09	S 53° 42' 00"E
111	401.32	21° 04' 00"	147.56	74.62	146.73	S 74° 51' 40"E
112	426.32	21° 04' 00"	186.75	70.27	185.87	S 74° 51' 40"E
113	451.32	21° 04' 00"	164.24	88.92	145.01	S 74° 51' 40"E
114	481.34	20° 12' 20"	250.85	126.06	247.85	S 70° 35' 50"E
115	466.34	20° 12' 20"	237.81	121.33	235.24	S 70° 35' 50"E
116	441.34	20° 12' 20"	225.07	113.04	217.64	S 70° 35' 50"E
117	404.31	10° 24' 00"	204.62	105.80	208.44	S 88° 40' 00"E
118	379.31	10° 24' 00"	196.18	90.02	195.22	S 88° 40' 00"E
119	354.31	10° 24' 00"	187.69	74.75	186.70	S 88° 40' 00"E
120	102.40	86° 56' 40"	133.33	87.17	141.05	S 62° 33' 40"W
121	77.40	86° 56' 40"	117.80	78.46	106.68	S 62° 33' 40"W
122	52.40	86° 56' 40"	78.65	49.76	72.23	S 62° 33' 40"W
123	204.28	45° 58' 50"	164.50	86.07	160.72	S 61° 31' 05"E
124	200.00	28° 22' 10"	170.32	67.41	118.00	S 50° 47' 37"E
125	25.00	95° 14' 30"	41.56	27.40	36.04	S 54° 02' 35"E
126	25.00	90° 30' 00"	39.40	23.22	35.51	N 88° 40' 40"E
127	25.00	84° 57' 17"	57.07	22.80	38.77	N 88° 17' 50"W
128	25.00	86° 10' 00"	57.60	23.88	34.18	N 82° 16' 40"E
129	25.00	96° 46' 32"	41.28	23.13	37.38	S 60° 49' 04"W
130	25.00	85° 47' 00"	50.18	24.01	35.20	N 80° 37' 24"W
131	25.00	96° 00' 00"	54.37	25.00	35.36	N 25° 34' 00"W
132	25.00	86° 08' 04"	37.50	23.87	34.18	N 62° 08' 32"E
133	15.00	86° 52' 40"	22.75	14.20	20.63	S 53° 01' 44"E
134	10.23	89° 31' 20"	18.48	18.08	23.67	N 85° 10' 30"E
135	25.00	90° 00' 00"	39.27	25.00	35.36	N 65° 34' 20"E
136	25.00	96° 00' 00"	39.27	25.00	35.36	S 25° 25' 40"E
137	30.00	180° 00' 00"	157.04	-	100.00	-
138	30.00	41° 24' 34"	36.14	18.00	35.36	N 0° 32' 28"E
139	30.00	41° 24' 34"	36.14	18.00	35.36	S 82° 16' 37"W
140	30.00	162° 40' 08"	220.35	-	-	-
141	30.00	162° 40' 08"	220.35	-	-	-
142	30.00	41° 24' 34"	36.14	18.00	35.36	N 30° 17' 37"W
143	30.00	41° 24' 34"	36.14	18.00	35.36	S 11° 06' 37"W
144	51.00	60° 31' 36"	29.13	53.10	51.72	S 55° 07' 02"W
145	134.00	7° 41' 16"	17.98	9.00	17.06	S 81° 52' 13"W
146	166.00	53° 58' 55"	186.25	84.66	180.55	S 13° 20' 36"W
147	43.00	180° 00' 00"	180.00	-	86.00	S 12° 30' 00"E
148	28.00	81° 18' 56"	49.44	24.43	34.96	S 82° 08' 07"W
149	480.00	7° 49' 13"	45.82	52.81	65.47	S 66° 33' 14"W
150	480.00	8° 10' 17"	36.19	18.10	36.78	N 70° 33' 16"W
151	485.00	10° 58' 53"	80.21	40.22	80.10	N 78° 19' 12"W
152	720.00	3° 36' 31"	45.21	22.61	45.20	N 83° 43' 23"W
153	102.40	21° 07' 46"	37.80	10.12	37.34	N 80° 31' 53"W
154	354.81	7° 41' 36"	74.43	37.27	74.37	N 77° 48' 48"W

D. W. *F. L. Laid*  
3-24-64

3/25/64 *John J. ...*

3/25/64 *...*

APPROVED  
COUNTY OF FAIRFAX  
DIVISION OF SURVEYING  
By: *[Signature]*  
Date: 3-24-68

FINAL PLAN  
RECOMMENDED FOR APPROVAL  
FAIRFAX COUNTY PLANNING COMMISSION  
*[Signature]*

APPROVED  
BOARD OF SUPERVISORS  
FAIRFAX COUNTY, VIRGINIA  
*[Signature]*

1000 11 11 10 11 11 11 11 11 11 11  
11 11 11 11 11 11 11 11 11 11  
11 11 11 11 11 11 11 11 11 11



DEPARTMENT OF PUBLIC WORKS  
Division of Street Design & Inspection  
Fairfax, Virginia

All street locations and/or easements  
conform to the requirements of this  
office and the necessary agreements  
or bonds have been received.

*[Signature]*  
Date: 3/25/68  
JWW

SPRINGFIELD SURVEYS  
5700 HANOVER AVENUE  
SPRINGFIELD, VIRGINIA

Drawn by	Date	Checked by	Date
GW	4-2-68		
200 20 VRF 1000	Field Book No. -	Hard Copy No. -	Scale -

REVISED